

CNBP antibody, N-term

Cat. No. GTX44628

Host	Rabbit
Clonality	Polyclonal
Isotype	IgG
Applications	WB
Reactivity	Human

Package

50 µg

Applications

Application Note

*Optimal dilutions/concentrations should be determined by the researcher.

Suggested dilution	Recommended dilution
WB	0.2-2.5 ug/ml

Not tested in other applications.

Calculated MW 19 kDa. ([Note](#))

Properties

Form	Liquid
Buffer	PBS, 2% Sucrose
Preservative	0.09% Sodium azide
Storage	Store as concentrated solution. Centrifuge briefly prior to opening vial. For short-term storage (1-2 weeks), store at 4°C. For long-term storage, aliquot and store at -20°C or below. Avoid multiple freeze-thaw cycles.
Concentration	0.5-1 mg/ml (Please refer to the vial label for the specific concentration.)
Immunogen	A synthetic peptide corresponding to a N-terminal region of Human CNBP
Purification	Affinity Purified
Conjugation	Unconjugated

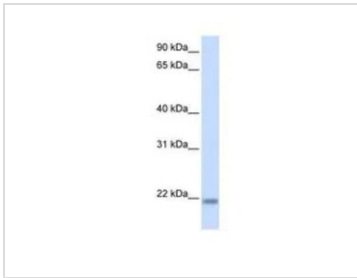
Note

For laboratory research use only. Not for any clinical, therapeutic, or diagnostic use in humans or animals. Not for animal or human consumption.

Purchasers shall not, and agree not to enable third parties to, analyze, copy, reverse engineer or otherwise attempt to determine the structure or sequence of the product.



For full product information, images and publications, please visit our [website](#).

DATA IMAGES

GTX44628 WB Image

WB analysis of human fetal brain tissue using GTX44628 CNBP antibody at 0.2-1µg/ml.


GTX44628 WB Image

WB analysis of human primary myoblasts cells using GTX44628 CNBP antibody at 1:1000.

Lane 1-4 :

- 1 : myoblasts cell lysate from normal control
- 2 : myoblasts cell lysate from myotonic dystrophy type 2 patients (DM2)
- 3 : myoblasts cell lysate from myotonic dystrophy type 2 patients (DM2)
- 4 : myoblasts cell lysate from myotonic dystrophy type 2 patients (DM2)



For full product information, images and publications, please visit our [website](#).