

Pentraxin 3 antibody, N-term

Cat. No. GTX45054

Host	Rabbit
Clonality	Polyclonal
Isotype	IgG
Applications	WB, ICC/IF, IHC-P, IHC-Fr, EM
Reactivity	Human, Mouse

References (3)

Package

50 µg

Applications

Application Note

*Optimal dilutions/concentrations should be determined by the researcher.

Suggested dilution	Recommended dilution
WB	0.2-2.5 ug/ml
ICC/IF	Assay dependent
IHC-P	2-10 ug/ml
IHC-Fr	Assay dependent
EM	Assay dependent

Not tested in other applications.

Calculated MW 42 kDa. ([Note](#))

Properties

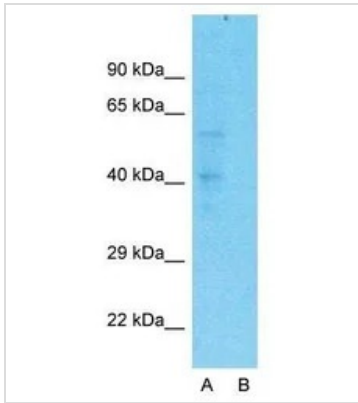
Form	Liquid
Buffer	PBS, 2% Sucrose
Preservative	0.09% Sodium azide
Storage	Store as concentrated solution. Centrifuge briefly prior to opening vial. For short-term storage (1-2 weeks), store at 4°C. For long-term storage, aliquot and store at -20°C or below. Avoid multiple freeze-thaw cycles.
Concentration	0.5-1 mg/ml (Please refer to the vial label for the specific concentration.)
Immunogen	A synthetic peptide corresponding to a N-terminal region of Human PTX3
Purification	Affinity Purified
Conjugation	Unconjugated

For full product information, images and publications, please visit our [website](#).

For laboratory research use only. Not for any clinical, therapeutic, or diagnostic use in humans or animals. Not for animal or human consumption.

Note

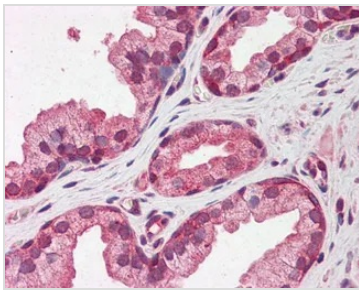
Purchasers shall not, and agree not to enable third parties to, analyze, copy, reverse engineer or otherwise attempt to determine the structure or sequence of the product.

DATA IMAGES

GTX45054 WB Image

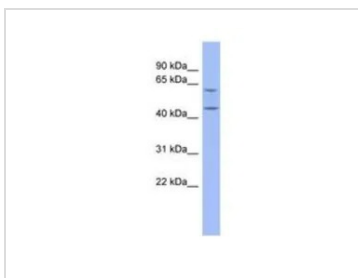
WB analysis of HepG2 cells using GTX45054 PTX3 antibody at 1.0µg/ml.

Lane A : primary antibody

Lane B : primary antibody + blocking peptide


GTX45054 IHC-P Image

IHC-P analysis of human prostate tissue using GTX45054 PTX3 antibody at 5µg/ml.


GTX45054 WB Image

WB analysis of MCF-7 cells using GTX45054 PTX3 antibody at 0.2-1µg/ml.



For full product information, images and publications, please visit our [website](https://www.genetex.com).