

CX3CL1 antibody

Cat. No. GTX45091

Host	Rabbit
Clonality	Polyclonal
Isotype	IgG
Applications	WB, Neutralizing /Inhibition
Reactivity	Mouse, Rat

Package
100 µg

Applications

Application Note

*Optimal dilutions/concentrations should be determined by the researcher.

Suggested dilution	Recommended dilution
WB	Assay dependent
Neutralizing /Inhibition	Assay dependent

Not tested in other applications.

Calculated MW 42 kDa. ([Note](#))

Properties

Form	Liquid
Buffer	PBS
Preservative	0.1% Sodium azide
Storage	Store as concentrated solution. Centrifuge briefly prior to opening vial. For short-term storage (1-2 weeks), store at 4°C. For long-term storage, aliquot and store at -20°C or below. Avoid multiple freeze-thaw cycles.
Concentration	1 mg/ml (Please refer to the vial label for the specific concentration.)
Immunogen	Recombinant protein - mouse CX3CL1
Purification	Protein A affinity purified From polyclonal serum
Conjugation	Unconjugated

Note

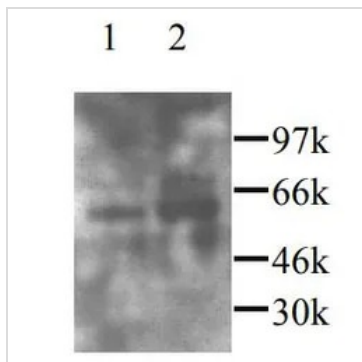
For laboratory research use only. Not for any clinical, therapeutic, or diagnostic use in humans or animals. Not for animal or human consumption.

Purchasers shall not, and agree not to enable third parties to, analyze, copy, reverse engineer or otherwise attempt to determine the structure or sequence of the product.



For full product information, images and publications, please visit our [website](#).

DATA IMAGES

**GTX45091 WB Image**

WB analysis of rat(lane 1) and mouse(lane 2) brain tissue lysate using GTX45091 CX3CL1 antibody.



For full product information, images and publications, please visit our [website](#).