

# DAP12 antibody

**Cat. No. GTX45097**

<b>Host</b>	Rabbit
<b>Clonality</b>	Polyclonal
<b>Isotype</b>	IgG
<b>Applications</b>	WB
<b>Reactivity</b>	Human

**Package**  
100 µg

## Applications

### Application Note

For WB: Use at a dilution of 1:2,000. Optimal dilutions/concentrations should be determined by the end user.

<b>Calculated MW</b>	12 kDa. ( <a href="#">Note</a> )
<b>Product Note</b>	DAP12 in transfected cell lysate

## Properties

<b>Form</b>	Liquid
<b>Buffer</b>	PBS
<b>Preservative</b>	0.1% Sodium azide
<b>Storage</b>	Store as concentrated solution. Centrifuge briefly prior to opening vial. For short-term storage (1-2 weeks), store at 4°C. For long-term storage, aliquot and store at -20°C or below. Avoid multiple freeze-thaw cycles.
<b>Concentration</b>	1 mg/ml (Please refer to the vial label for the specific concentration.)
<b>Immunogen</b>	Recombinant protein - amino acids 28-40 of human DAP12.
<b>Purification</b>	Protein G affinity purified From polyclonal serum
<b>Conjugation</b>	Unconjugated

### Note

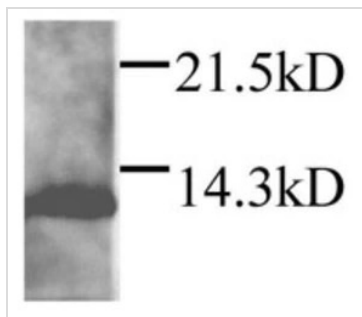
For laboratory research use only. Not for any clinical, therapeutic, or diagnostic use in humans or animals. Not for animal or human consumption.

Purchasers shall not, and agree not to enable third parties to, analyze, copy, reverse engineer or otherwise attempt to determine the structure or sequence of the product.



For full product information, images and publications, please visit our [website](#).

## DATA IMAGES



### GTX45097 WB Image

Western blot detection of hDAP12 in transfected cell lysate



For full product information, images and publications, please visit our [website](#).