

## MIP3 alpha antibody

**Cat. No. GTX45123**

<b>Host</b>	Rabbit
<b>Clonality</b>	Polyclonal
<b>Isotype</b>	IgG
<b>Applications</b>	WB, IP
<b>Reactivity</b>	Rat

**Package**  
100 µg

## Applications

**Application Note**

For WB: Use at a dilution of 1:2,000. For IP: Use at a dilution of 1:500. Optimal dilutions/concentrations should be determined by the end user.

**Calculated MW** 11 kDa. ([Note](#))**Product Note** MIP3 alpha in transfected cells

## Properties

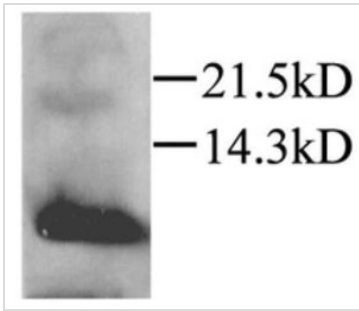
**Form** Liquid**Buffer** PBS**Preservative** 0.1% Sodium azide**Storage** Store as concentrated solution. Centrifuge briefly prior to opening vial. For short-term storage (1-2 weeks), store at 4°C. For long-term storage, aliquot and store at -20°C or below. Avoid multiple freeze-thaw cycles.**Concentration** 1 mg/ml (Please refer to the vial label for the specific concentration.)**Immunogen** Recombinant protein - amino acids 1-70 of mature rat MIP3 alpha.**Purification** Protein A affinity purified  
From polyclonal serum**Conjugation** Unconjugated**Note** For laboratory research use only. Not for any clinical, therapeutic, or diagnostic use in humans or animals. Not for animal or human consumption.

Purchasers shall not, and agree not to enable third parties to, analyze, copy, reverse engineer or otherwise attempt to determine the structure or sequence of the product.



For full product information, images and publications, please visit our [website](#).

## DATA IMAGES

**GTX45123 WB Image**

Rat LARC detected by Western blot in transfected cells



For full product information, images and publications, please visit our [website](#).