

MIP1 beta antibody

Cat. No. GTX45129

Host	Rabbit
Clonality	Polyclonal
Isotype	IgG
Application	WB, IP, Neutralizing/Inhibition
Reactivity	Mouse, Rat

Package
100 µg

APPLICATION

Application Note

For WB: Use at a dilution of 1:2,000. For IP: Use at a dilution of 1:500. The use of this product can also be used, but not yet reported. Optimal dilutions/concentrations should be determined by the end user.

Calculated MW 10 kDa. ([Note](#))

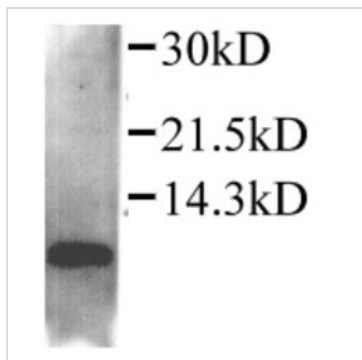
PROPERTIES

Form	Liquid
Buffer	Rabbit immunoglobulin
Preservative	0.1% Sodium azide
Storage	Store as concentrated solution. Centrifuge briefly prior to opening vial. For short-term storage (1-2 weeks), store at 4°C. For long-term storage, aliquot and store at -20°C or below. Avoid multiple freeze-thaw cycles.
Concentration	1 mg/ml (Please refer to the vial label for the specific concentration.)
Immunogen	Recombinant protein - amino acids 1-69 of mature rat MIP1 beta.
Purification	Protein A affinity purified.
Conjugation	Unconjugated
Note	For laboratory research use only. Not for any clinical, therapeutic, or diagnostic use in humans or animals. Not for animal or human consumption. Purchasers shall not, and agree not to enable third parties to, analyze, copy, reverse engineer or otherwise attempt to determine the structure or sequence of the product.



For full product information, images and publications, please visit our [website](#).

DATA IMAGES



GTx45129 WB Image

CCL4 detected by WB in supernatant of RAW264.7 cells treated with LPS(15h).



For full product information, images and publications, please visit our [website](#).