

SENP3 antibody, N-term

Cat. No. GTX45298

Host	Rabbit
Clonality	Polyclonal
Isotype	IgG
Applications	WB, ICC/IF
Reactivity	Human, Rat

Package
50 µg

Applications

Application Note

*Optimal dilutions/concentrations should be determined by the researcher.

Suggested dilution	Recommended dilution
WB	0.2-2.5 ug/ml
ICC/IF	Assay dependent

Not tested in other applications.

Calculated MW 65 kDa. ([Note](#))

Properties

Form	Liquid
Buffer	PBS, 2% Sucrose
Preservative	0.09% Sodium azide
Storage	Store as concentrated solution. Centrifuge briefly prior to opening vial. For short-term storage (1-2 weeks), store at 4°C. For long-term storage, aliquot and store at -20°C or below. Avoid multiple freeze-thaw cycles.
Concentration	0.5-1 mg/ml (Please refer to the vial label for the specific concentration.)
Immunogen	A synthetic peptide corresponding to a N-terminal region of Human SENP3
Purification	Affinity Purified
Conjugation	Unconjugated

Note

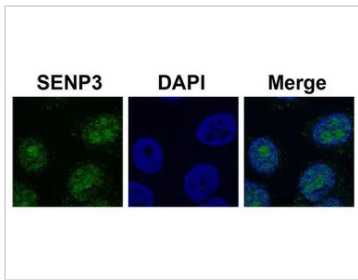
For laboratory research use only. Not for any clinical, therapeutic, or diagnostic use in humans or animals. Not for animal or human consumption.

Purchasers shall not, and agree not to enable third parties to, analyze, copy, reverse engineer or otherwise attempt to determine the structure or sequence of the product.

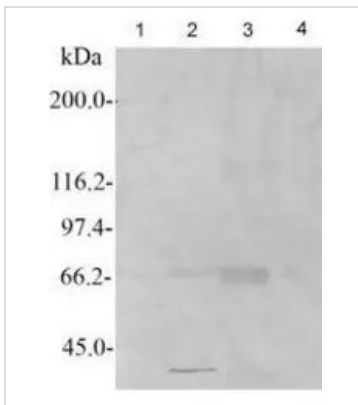


For full product information, images and publications, please visit our [website](#).

DATA IMAGES

**GTX45298 ICC/IF Image**

ICC/IF analysis of HeLa cells using GTX45298 SENP3 antibody at 2 μ g/ml.

**GTX45298 WB Image**

WB analysis of rat liver, brain, testis, and kidney tissue using GTX45298 SENP3 antibody at 1:1000.

Lane :

- 1 : Rat Liver cells (200ug)
- 2 : Rat Brain cells (200ug)
- 3 : Rat Testis cells (200ug)
- 4 : Rat Kidney cells (200ug)



For full product information, images and publications, please visit our [website](#).