

C1orf77 antibody, Internal

Cat. No. GTX45303

Host	Rabbit
Clonality	Polyclonal
Isotype	IgG
Applications	WB, IHC-P, IP
Reactivity	Human, Mouse

Package

50 µg

Applications

Application Note

*Optimal dilutions/concentrations should be determined by the researcher.

Suggested dilution	Recommended dilution
WB	0.2-2.5 ug/ml
IHC-P	2-10 ug/ml
IP	Assay dependent

Not tested in other applications.

Calculated MW 26 kDa. ([Note](#))

Properties

Form	Liquid
Buffer	PBS, 2% Sucrose
Preservative	0.09% Sodium azide
Storage	Store as concentrated solution. Centrifuge briefly prior to opening vial. For short-term storage (1-2 weeks), store at 4°C. For long-term storage, aliquot and store at -20°C or below. Avoid multiple freeze-thaw cycles.
Concentration	0.5-1 mg/ml (Please refer to the vial label for the specific concentration.)
Immunogen	A synthetic peptide corresponding to an Internal region of Human C1orf77
Purification	Affinity Purified
Conjugation	Unconjugated

Note

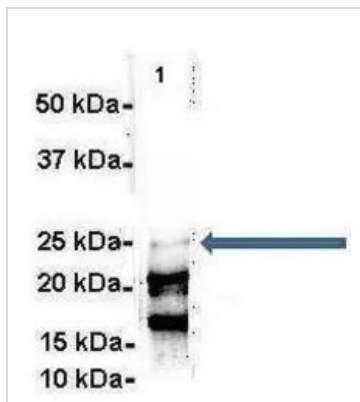
For laboratory research use only. Not for any clinical, therapeutic, or diagnostic use in humans or animals. Not for animal or human consumption.

Purchasers shall not, and agree not to enable third parties to, analyze, copy, reverse engineer or otherwise attempt to determine the structure or sequence of the product.



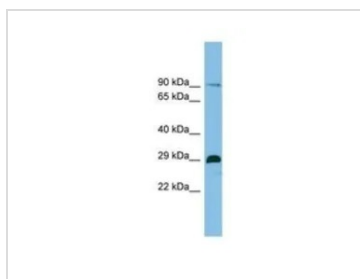
For full product information, images and publications, please visit our [website](#).

DATA IMAGES



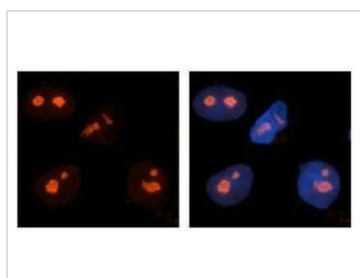
GTX45303 IP Image

IP analysis of mouse brain tissue using GTX45303 C1orf77 antibody at 1:500. IP antibody: 6µg.



GTX45303 WB Image

WB analysis of THP-1 cells using GTX45303 C1orf77 antibody at 0.2-1µg/ml.



GTX45303 IHC-P Image

IHC-P analysis of human brain stems (NT2) cells using GTX45303 C1orf77 antibody at 1:500.

Red: C1orf77

Blue: DAPI



For full product information, images and publications, please visit our [website](https://www.genetex.com).