

## IFIT5 antibody, Internal

**Cat. No. GTX45362**

<b>Host</b>	Rabbit
<b>Clonality</b>	Polyclonal
<b>Isotype</b>	IgG
<b>Applications</b>	WB
<b>Reactivity</b>	Human

**Package**  
50 µg

## Applications

**Application Note**

\*Optimal dilutions/concentrations should be determined by the researcher.

Suggested dilution	Recommended dilution
WB	0.2-2.5 ug/ml

Not tested in other applications.

**Calculated MW** 56 kDa. ([Note](#))

## Properties

<b>Form</b>	Liquid
<b>Buffer</b>	PBS, 2% Sucrose
<b>Preservative</b>	0.09% Sodium azide
<b>Storage</b>	Store as concentrated solution. Centrifuge briefly prior to opening vial. For short-term storage (1-2 weeks), store at 4°C. For long-term storage, aliquot and store at -20°C or below. Avoid multiple freeze-thaw cycles.
<b>Concentration</b>	0.5-1 mg/ml (Please refer to the vial label for the specific concentration.)
<b>Immunogen</b>	A synthetic peptide corresponding to an Internal region of Human IFIT5
<b>Purification</b>	Affinity Purified
<b>Conjugation</b>	Unconjugated

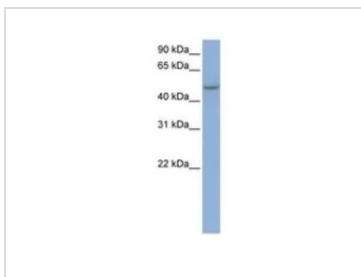
**Note** For laboratory research use only. Not for any clinical, therapeutic, or diagnostic use in humans or animals. Not for animal or human consumption.

Purchasers shall not, and agree not to enable third parties to, analyze, copy, reverse engineer or otherwise attempt to determine the structure or sequence of the product.

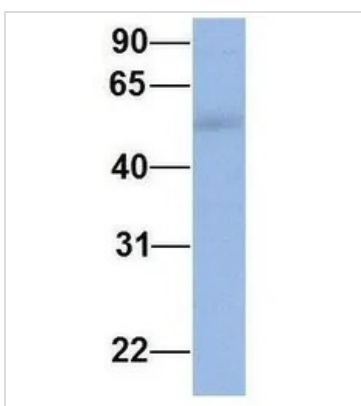


For full product information, images and publications, please visit our [website](#).

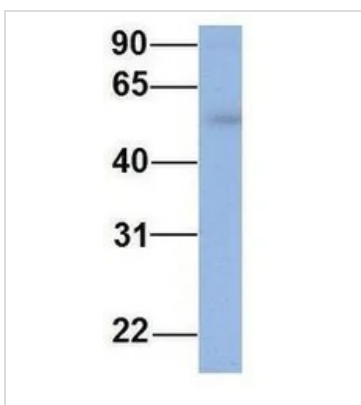
## DATA IMAGES

**GTX45362 WB Image**

WB analysis of MCF-7 cells using GTX45362 IFIT5 antibody at 0.2-1 $\mu$ g/ml.

**GTX45362 WB Image**

WB analysis of human placenta tissue using GTX45362 IFIT5 antibody at 1 $\mu$ g/ml.

**GTX45362 WB Image**

WB analysis of human fetal muscle tissue using GTX45362 IFIT5 antibody at 1 $\mu$ g/ml.



For full product information, images and publications, please visit our [website](#).