

## IL13 Receptor alpha 2 antibody, N-term

**Cat. No. GTX45500**

<b>Host</b>	Rabbit
<b>Clonality</b>	Polyclonal
<b>Isotype</b>	IgG
<b>Applications</b>	WB
<b>Reactivity</b>	Human, Mouse

**Package**

50 µg

## Applications

**Application Note**

\*Optimal dilutions/concentrations should be determined by the researcher.

Suggested dilution	Recommended dilution
WB	0.2-2.5 ug/ml

Not tested in other applications.

**Calculated MW** 44 kDa. ( [Note](#) )

## Properties

<b>Form</b>	Liquid
<b>Buffer</b>	PBS, 2% Sucrose
<b>Preservative</b>	0.09% Sodium azide
<b>Storage</b>	Store as concentrated solution. Centrifuge briefly prior to opening vial. For short-term storage (1-2 weeks), store at 4°C. For long-term storage, aliquot and store at -20°C or below. Avoid multiple freeze-thaw cycles.
<b>Concentration</b>	0.5-1 mg/ml (Please refer to the vial label for the specific concentration.)
<b>Immunogen</b>	A synthetic peptide corresponding to a N-terminal region of Human IL13RA2
<b>Purification</b>	Affinity Purified
<b>Conjugation</b>	Unconjugated

**Note**

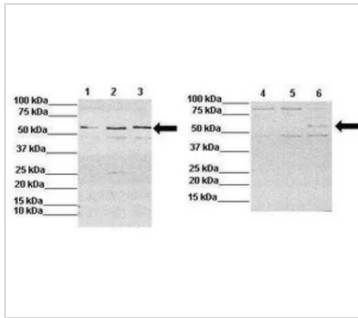
For laboratory research use only. Not for any clinical, therapeutic, or diagnostic use in humans or animals. Not for animal or human consumption.

Purchasers shall not, and agree not to enable third parties to, analyze, copy, reverse engineer or otherwise attempt to determine the structure or sequence of the product.



For full product information, images and publications, please visit our [website](#).

## DATA IMAGES



### GTX45500 WB Image

WB analysis of CT26, MC38, and HCT116 cells using GTX45500 IL13RA2 antibody at 1:1000.

Lane 1: 60µg mouse CT26 lysate

Lane 2: 60µg mouse MC38 lysate

Lane 3: 60µg human HCT116 lysate

Lane 4: 60µg mouse CT26 lysate + blocking peptide

Lane 5: 60µg mouse MC38 lysate + blocking peptide

Lane 6: 60µg human HCT116 lysate + blocking peptide



For full product information, images and publications, please visit our [website](https://www.genetex.com).