

SYT9 antibody, Internal

Cat. No. GTX45560

Host	Rabbit
Clonality	Polyclonal
Isotype	IgG
Applications	WB, IHC-P
Reactivity	Human, Mouse

References (1)

Package

50 µg

Applications

Application Note

*Optimal dilutions/concentrations should be determined by the researcher.

Suggested dilution	Recommended dilution
WB	0.2-2.5 ug/ml
IHC-P	2-10 ug/ml

Not tested in other applications.

Calculated MW 56 kDa. ([Note](#))

Properties

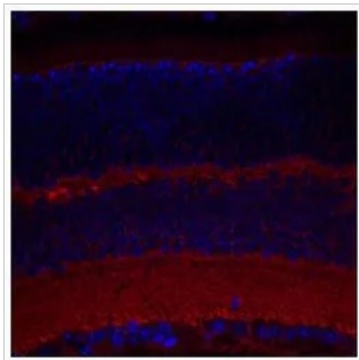
Form	Liquid
Buffer	PBS, 2% Sucrose
Preservative	0.09% Sodium azide
Storage	Store as concentrated solution. Centrifuge briefly prior to opening vial. For short-term storage (1-2 weeks), store at 4°C. For long-term storage, aliquot and store at -20°C or below. Avoid multiple freeze-thaw cycles.
Concentration	0.5-1 mg/ml (Please refer to the vial label for the specific concentration.)
Immunogen	A synthetic peptide corresponding to an Internal region of Human SYT9
Purification	Affinity Purified
Conjugation	Unconjugated

Note

For laboratory research use only. Not for any clinical, therapeutic, or diagnostic use in humans or animals. Not for animal or human consumption.

Purchasers shall not, and agree not to enable third parties to, analyze, copy, reverse engineer or otherwise attempt to determine the structure or sequence of the product.

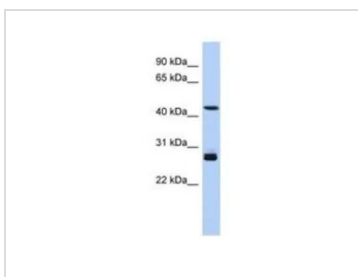
For full product information, images and publications, please visit our [website](#).

DATA IMAGES

GTX45560 IHC-P Image

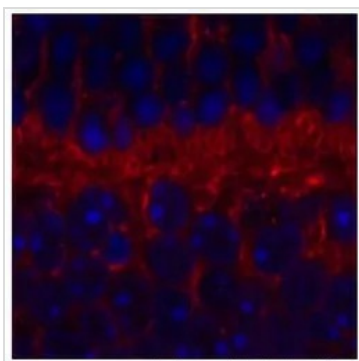
IHC-P analysis of mouse retina tissue using GTX45560 SYT9 antibody at 1:200.

Red : SYT9

Blue : DAPI


GTX45560 WB Image

WB analysis of human fetal muscle tissue using GTX45560 SYT9 antibody at 0.2-1µg/ml.


GTX45560 IHC-P Image

IHC-P analysis of mouse retina tissue using GTX45560 SYT9 antibody at 1:200.

Red : SYT9

Blue : DAPI



For full product information, images and publications, please visit our [website](https://www.genetex.com).