

## p73 antibody [5B429]

**Cat. No. GTX46123**

<b>Host</b>	Mouse
<b>Clonality</b>	Monoclonal
<b>Isotype</b>	IgG1
<b>Applications</b>	WB, ICC/IF, IHC-P, IHC-Fr, FCM, IP, ChIP assay, MS
<b>Reactivity</b>	Human, Mouse, Rat

References ( 1 )

Package

100 µl

## Applications

**Application Note**

\*Optimal dilutions/concentrations should be determined by the researcher.

Suggested dilution	Recommended dilution
WB	2 µg/ml
ICC/IF	1:20 - 1:1000
IHC-P	5 - 15 µg/ml
IHC-Fr	5 - 15 µg/ml
FCM	1 µg/ml
IP	1:20 - 1:1000
ChIP assay	1:20 - 1:1000
MS	Assay dependent

**Note : Permibilization : 0.1% saponin**

Not tested in other applications.

**Calculated MW** 70 kDa. ( [Note](#) )**Product Note**

p73 antibody (clone 5B429) recognizes all of the TAp73 isoforms i.e. isoforms with an intact NH2-terminal transactivation domain (Thottassery et al, 2006, PMID 16505115). Sayan et al 2005 (PMID 15781249) showed that p73 antibody (clone 5B429) reacted with all tested TAp73 isoforms but not deltaNp73 whereas p73 antibody clone 5B1288 showed reactivity against all p73 isoforms including delta Np73. Caspase-cleaved p73 fragments, including 55 kDa and 45 kDa, have been described in literature (Sayan et al, 2008). p73 antibody clone 5B429 has also been referred to as 429 in the literature.

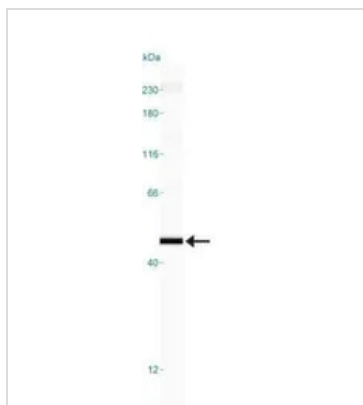
## Properties

<b>Form</b>	Liquid
<b>Buffer</b>	PBS
<b>Preservative</b>	0.05% Sodium azide

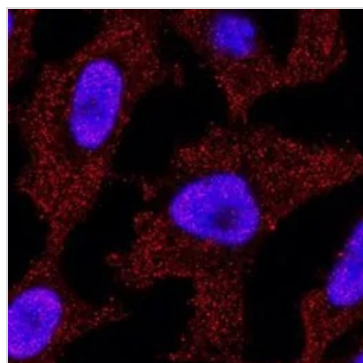


For full product information, images and publications, please visit our [website](#).

<b>Storage</b>	Store as concentrated solution. Centrifuge briefly prior to opening vial. For short-term storage (1-2 weeks), store at 4°C. For long-term storage, aliquot and store at -20°C or below. Avoid multiple freeze-thaw cycles.
<b>Concentration</b>	1 mg/ml (Please refer to the vial label for the specific concentration.)
<b>Immunogen</b>	This antibody was raised against full-length human p73. It reacts with an epitope that is located on the N-terminal region of human p73. It does not cross react with p53.
<b>Purification</b>	Protein G purified
<b>Conjugation</b>	Unconjugated
<b>Note</b>	For laboratory research use only. Not for any clinical, therapeutic, or diagnostic use in humans or animals. Not for animal or human consumption.  Purchasers shall not, and agree not to enable third parties to, analyze, copy, reverse engineer or otherwise attempt to determine the structure or sequence of the product.

**DATA IMAGES**

**GTX46123 WB Image**

WB analysis of HeLa cell lysate using GTX46123 p73 antibody [5B429].


**GTX46123 ICC/IF Image**

ICC/IF analysis of HeLa cells using GTX46123 p73 antibody [5B429].

Red : primary antibody

Blue : DAPI

Dilution : 3 ug/mL



For full product information, images and publications, please visit our [website](#).