

TMEM30A antibody, Internal

Cat. No. GTX46298

Host	Rabbit
Clonality	Polyclonal
Isotype	IgG
Application	WB, IHC-P
Reactivity	Human

Package

50 µg

APPLICATION

Application Note

*Optimal dilutions/concentrations should be determined by the researcher.

Suggested dilution	Recommended dilution
WB	0.2-2.5 ug/ml
IHC-P	2-10 ug/ml

Not tested in other applications.

Calculated MW 41 kDa. ([Note](#))

PROPERTIES

Form	Liquid
Buffer	PBS, 2% Sucrose
Preservative	0.09% Sodium azide
Storage	Store as concentrated solution. Centrifuge briefly prior to opening vial. For short-term storage (1-2 weeks), store at 4°C. For long-term storage, aliquot and store at -20°C or below. Avoid multiple freeze-thaw cycles.
Concentration	0.5-1 mg/ml (Please refer to the vial label for the specific concentration.)
Immunogen	A synthetic peptide corresponding to an Internal region of Human TMEM30A
Purification	Affinity Purified
Conjugation	Unconjugated

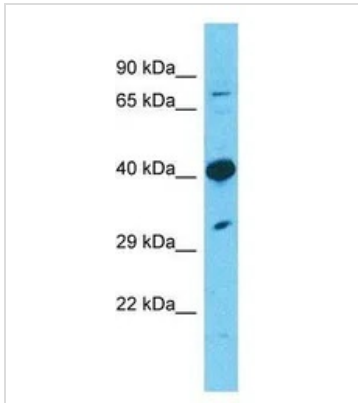
Note

For laboratory research use only. Not for any clinical, therapeutic, or diagnostic use in humans or animals. Not for animal or human consumption.

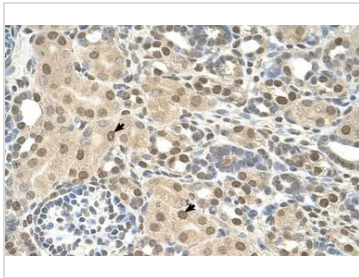
Purchasers shall not, and agree not to enable third parties to, analyze, copy, reverse engineer or otherwise attempt to determine the structure or sequence of the product.



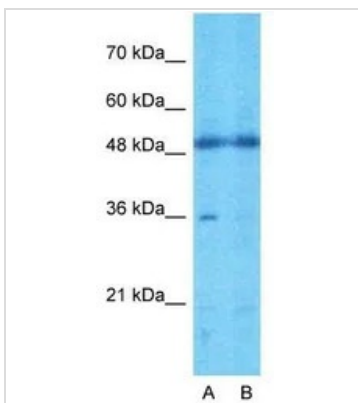
For full product information, images and publications, please visit our [website](#).

DATA IMAGES

GTX46298 WB Image

WB analysis of 293T cells using GTX46298 TMEM30A antibody at 1µg/ml.


GTX46298 IHC-P Image

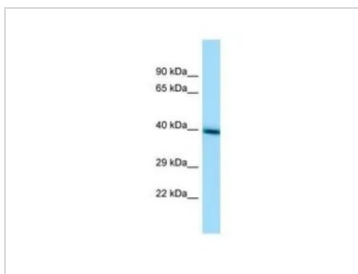
IHC-P analysis of human kidney tissue using GTX46298 TMEM30A antibody at 4.0-8.0µg/ml.


GTX46298 WB Image

WB analysis of human B lymphoblast cells using GTX46298 TMEM30A antibody at 1µg/ml.

Lane A : Primary antibody

Lane B : Primary antibody + blocking peptide


GTX46298 WB Image

WB analysis of HepG2 cells using GTX46298 TMEM30A antibody at 1µg/ml.



For full product information, images and publications, please visit our [website](https://www.genetex.com).