

# TSPAN31 antibody, Internal

**Cat. No. GTX46417**

<b>Host</b>	Rabbit
<b>Clonality</b>	Polyclonal
<b>Isotype</b>	IgG
<b>Applications</b>	WB, IHC-P
<b>Reactivity</b>	Human

**Package**  
50 µg

## Applications

### Application Note

\*Optimal dilutions/concentrations should be determined by the researcher.

Suggested dilution	Recommended dilution
WB	0.2-2.5 ug/ml
IHC-P	2-10 ug/ml

Not tested in other applications.

**Calculated MW** 23 kDa. ( [Note](#) )

## Properties

<b>Form</b>	Liquid
<b>Buffer</b>	PBS, 2% Sucrose
<b>Preservative</b>	0.09% Sodium azide
<b>Storage</b>	Store as concentrated solution. Centrifuge briefly prior to opening vial. For short-term storage (1-2 weeks), store at 4°C. For long-term storage, aliquot and store at -20°C or below. Avoid multiple freeze-thaw cycles.
<b>Concentration</b>	0.5-1 mg/ml (Please refer to the vial label for the specific concentration.)
<b>Immunogen</b>	A synthetic peptide corresponding to an Internal region of Human TSPAN31
<b>Purification</b>	Affinity Purified
<b>Conjugation</b>	Unconjugated

### Note

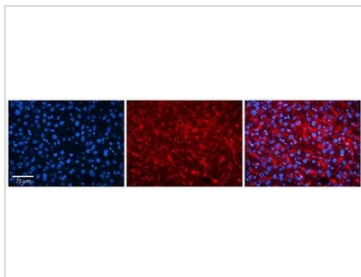
For laboratory research use only. Not for any clinical, therapeutic, or diagnostic use in humans or animals. Not for animal or human consumption.

Purchasers shall not, and agree not to enable third parties to, analyze, copy, reverse engineer or otherwise attempt to determine the structure or sequence of the product.



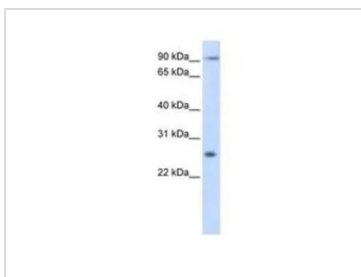
For full product information, images and publications, please visit our [website](#).

## DATA IMAGES



### GTX46417 IHC-P Image

IHC-P analysis of human liver tissue using GTX46417 TSPAN31 antibody at 1:600.



### GTX46417 WB Image

WB analysis of human muscle tissue using GTX46417 TSPAN31 antibody at 0.2-1 µg/ml.



For full product information, images and publications, please visit our [website](#).