

## NOLC1 antibody, C-term

Cat. No. GTX46486

Host	Rabbit
Clonality	Polyclonal
Isotype	IgG
Applications	WB, IHC-P, IHC-Wm
Reactivity	Human, Zebrafish

Package  
100 µg

## Applications

## Application Note

\*Optimal dilutions/concentrations should be determined by the researcher.

Suggested dilution	Recommended dilution
WB	0.2-2.5 ug/ml
IHC-P	2-10 ug/ml
IHC-Wm	Assay dependent

Not tested in other applications.

Calculated MW 74 kDa. ( [Note](#) )

## Properties

Form	Liquid
Buffer	PBS, 2% Sucrose
Preservative	0.09% Sodium azide
Storage	Store as concentrated solution. Centrifuge briefly prior to opening vial. For short-term storage (1-2 weeks), store at 4°C. For long-term storage, aliquot and store at -20°C or below. Avoid multiple freeze-thaw cycles.
Concentration	0.5-1 mg/ml (Please refer to the vial label for the specific concentration.)
Immunogen	A synthetic peptide corresponding to a C-terminal region of Human NOLC1
Purification	Protein A purified
Conjugation	Unconjugated

## Note

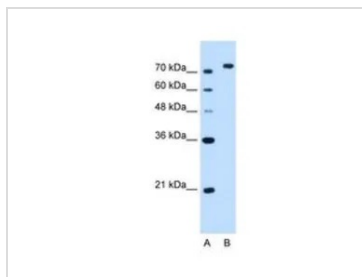
For laboratory research use only. Not for any clinical, therapeutic, or diagnostic use in humans or animals. Not for animal or human consumption.

Purchasers shall not, and agree not to enable third parties to, analyze, copy, reverse engineer or otherwise attempt to determine the structure or sequence of the product.



For full product information, images and publications, please visit our [website](#).

## DATA IMAGES

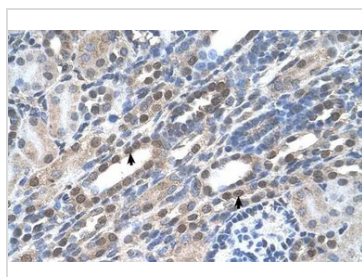


### GTx46486 WB Image

WB analysis of HepG2 cells using GTx46486 NOLC1 antibody at 2.5µg/ml.

Lane A : marker

Lane B : HepG2 cells



### GTx46486 IHC-P Image

IHC-P analysis of human kidney tissue using GTx46486 NOLC1 antibody at 4.0-8.0µg/ml.



### GTx46486 IHC-Wm Image

IHC-Wm analysis of zebrafish embryo (27 hpf) using GTx46486 NOLC1 antibody at 1:250.



For full product information, images and publications, please visit our [website](https://www.genetex.com).