

CPS1 antibody, Internal

Cat. No. GTX46535

Host	Rabbit
Clonality	Polyclonal
Isotype	IgG
Applications	WB, IHC-P
Reactivity	Human, Pig

Package
100 µg

Applications

Application Note

*Optimal dilutions/concentrations should be determined by the researcher.

Suggested dilution	Recommended dilution
WB	Assay dependent
IHC-P	2-10 ug/ml

Not tested in other applications.

Calculated MW 165 kDa. ([Note](#))

Properties

Form	Liquid
Buffer	PBS, 2% Sucrose
Preservative	0.09% Sodium azide
Storage	Store as concentrated solution. Centrifuge briefly prior to opening vial. For short-term storage (1-2 weeks), store at 4°C. For long-term storage, aliquot and store at -20°C or below. Avoid multiple freeze-thaw cycles.
Concentration	0.5-1 mg/ml (Please refer to the vial label for the specific concentration.)
Immunogen	A synthetic peptide corresponding to an Internal region of Human CPS1
Purification	Protein A purified
Conjugation	Unconjugated

Note

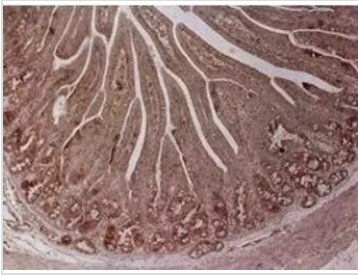
For laboratory research use only. Not for any clinical, therapeutic, or diagnostic use in humans or animals. Not for animal or human consumption.

Purchasers shall not, and agree not to enable third parties to, analyze, copy, reverse engineer or otherwise attempt to determine the structure or sequence of the product.



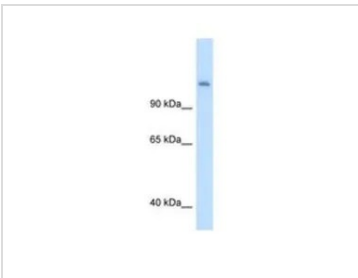
For full product information, images and publications, please visit our [website](#).

DATA IMAGES



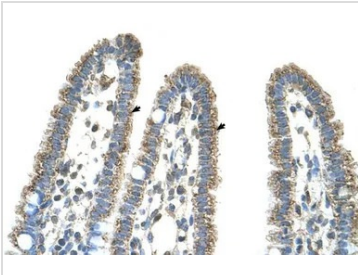
GTx46535 IHC-P Image

IHC-P analysis of Pig duodenum tissue using GTx46535 CPS1 antibody at 1:500.



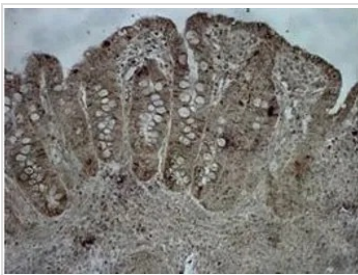
GTx46535 WB Image

WB analysis of human fetal liver tissue using GTx46535 CPS1 antibody at 5.0µg/ml.



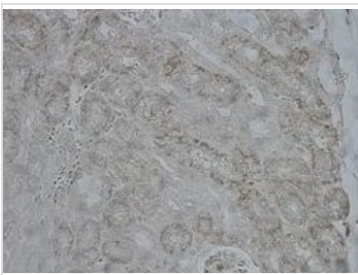
GTx46535 IHC-P Image

IHC-P analysis of human intestine tissue using GTx46535 CPS1 antibody at 4.0-8.0µg/ml.



GTx46535 IHC-P Image

IHC-P analysis of Pig ileum tissue using GTx46535 CPS1 antibody at 1:500.



GTx46535 IHC-P Image

IHC-P analysis of Pig kidney tissue using GTx46535 CPS1 antibody at 1:500.



For full product information, images and publications, please visit our [website](#).