

COX10 antibody, Internal

Cat. No. GTX46576

Host	Rabbit
Clonality	Polyclonal
Isotype	IgG
Applications	WB
Reactivity	Human, Mouse

Package

50 µg

Applications

Application Note

*Optimal dilutions/concentrations should be determined by the researcher.

Suggested dilution	Recommended dilution
WB	0.2-2.5 ug/ml
Not tested in other applications.	

Calculated MW 49 kDa. ([Note](#))

Properties

Form	Liquid
Buffer	PBS, 2% Sucrose
Preservative	0.09% Sodium azide
Storage	Store as concentrated solution. Centrifuge briefly prior to opening vial. For short-term storage (1-2 weeks), store at 4°C. For long-term storage, aliquot and store at -20°C or below. Avoid multiple freeze-thaw cycles.
Concentration	0.5-1 mg/ml (Please refer to the vial label for the specific concentration.)
Immunogen	A synthetic peptide corresponding to an Internal region of Human COX10
Purification	Affinity Purified
Conjugation	Unconjugated

Note

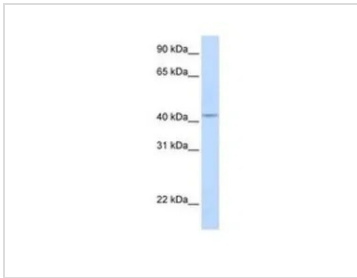
For laboratory research use only. Not for any clinical, therapeutic, or diagnostic use in humans or animals. Not for animal or human consumption.

Purchasers shall not, and agree not to enable third parties to, analyze, copy, reverse engineer or otherwise attempt to determine the structure or sequence of the product.



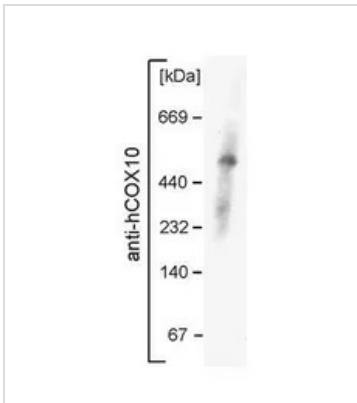
For full product information, images and publications, please visit our [website](#).

DATA IMAGES



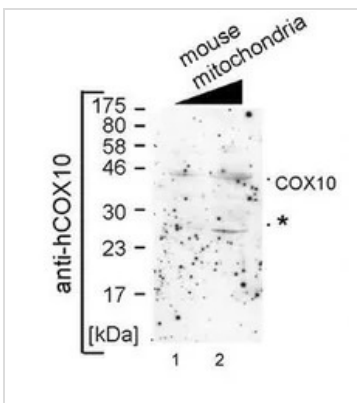
GTx46576 WB Image

WB analysis of human fetal lung tissue using GTx46576 COX10 antibody at 0.2-1µg/ml.



GTx46576 WB Image

WB analysis of mouse mitochondria complex using GTx46576 COX10 antibody at 1:1000. (Blue-native PAGE.)



GTx46576 WB Image

WB analysis of mouse mitochondria lysate using GTx46576 COX10 antibody at 1:1000.

Lane 1: 15µg

Lane 2: 30µg



For full product information, images and publications, please visit our [website](https://www.genetex.com).