

p22phox antibody, Internal

Cat. No. GTX46749

Host	Rabbit
Clonality	Polyclonal
Isotype	IgG
Applications	WB, IHC-P
Reactivity	Human

Package
50 µg

Applications

Application Note

*Optimal dilutions/concentrations should be determined by the researcher.

Suggested dilution	Recommended dilution
WB	0.2-2.5 ug/ml
IHC-P	2-10 ug/ml

Not tested in other applications.

Calculated MW 21 kDa. ([Note](#))

Properties

Form	Liquid
Buffer	PBS, 2% Sucrose
Preservative	0.09% Sodium azide
Storage	Store as concentrated solution. Centrifuge briefly prior to opening vial. For short-term storage (1-2 weeks), store at 4°C. For long-term storage, aliquot and store at -20°C or below. Avoid multiple freeze-thaw cycles.
Concentration	0.5-1 mg/ml (Please refer to the vial label for the specific concentration.)
Immunogen	A synthetic peptide corresponding to an Internal region of Human p22phox.
Purification	Affinity Purified
Conjugation	Unconjugated

Note

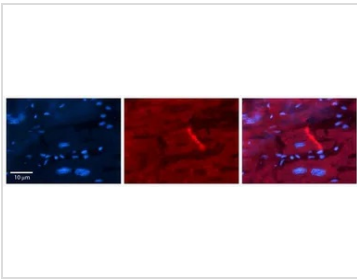
For laboratory research use only. Not for any clinical, therapeutic, or diagnostic use in humans or animals. Not for animal or human consumption.

Purchasers shall not, and agree not to enable third parties to, analyze, copy, reverse engineer or otherwise attempt to determine the structure or sequence of the product.



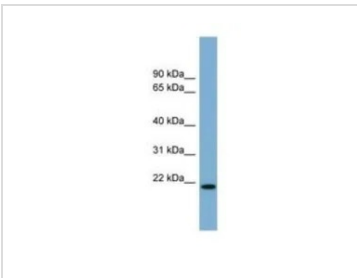
For full product information, images and publications, please visit our [website](#).

DATA IMAGES



GTX46749 IHC-P Image

IHC-P analysis of human heart tissue using GTX46749 CYBA antibody at 1:100. Left to right: DAPI, CYBA, Merge. Heat induced antigen retrieval method using Antigen retrieval buffer (Tris EDTA, pH 9.0) for 2-3 minutes in pressure cooker.



GTX46749 WB Image

WB analysis of human fetal small intestine tissue using GTX46749 CYBA antibody at 0.2-1 µg/ml.



For full product information, images and publications, please visit our [website](https://www.genetex.com).