

UBE2E2 antibody, N-term

Cat. No. GTX46884

Host	Rabbit
Clonality	Polyclonal
Isotype	IgG
Applications	WB, IHC-P
Reactivity	Human

Package
50 µg

Applications

Application Note

*Optimal dilutions/concentrations should be determined by the researcher.

Suggested dilution	Recommended dilution
WB	0.2-2.5 ug/ml
IHC-P	2-10 ug/ml

Not tested in other applications.

Calculated MW 22 kDa. ([Note](#))

Properties

Form	Liquid
Buffer	PBS, 2% Sucrose
Preservative	0.09% Sodium azide
Storage	Store as concentrated solution. Centrifuge briefly prior to opening vial. For short-term storage (1-2 weeks), store at 4°C. For long-term storage, aliquot and store at -20°C or below. Avoid multiple freeze-thaw cycles.
Concentration	0.5-1 mg/ml (Please refer to the vial label for the specific concentration.)
Immunogen	A synthetic peptide corresponding to a N-terminal region of Human UBE2E2
Purification	Affinity Purified
Conjugation	Unconjugated

Note

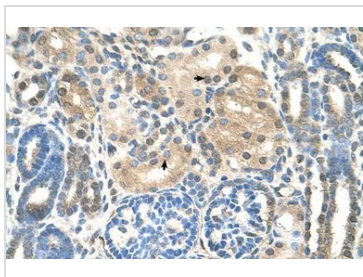
For laboratory research use only. Not for any clinical, therapeutic, or diagnostic use in humans or animals. Not for animal or human consumption.

Purchasers shall not, and agree not to enable third parties to, analyze, copy, reverse engineer or otherwise attempt to determine the structure or sequence of the product.

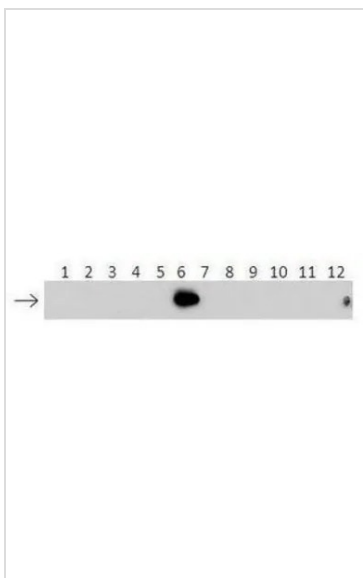


For full product information, images and publications, please visit our [website](#).

DATA IMAGES

**GTX46884 IHC-P Image**

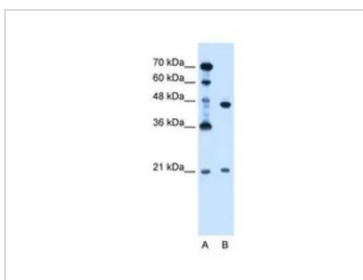
IHC-P analysis of human kidney tissue using GTX46884 UBE2E2 antibody at 4.0-8.0 μ g/ml.

**GTX46884 WB Image**

WB analysis of human UBE2 recombinant protein using GTX46884 UBE2E2 antibody at 1:500.

Sample type:

- 1: 40ng HIS-UBE2D1 protein
- 2: 40ng HIS-UBE2D2 protein
- 3: 40ng HIS-UBE2D3 protein
- 4: 40ng HIS-UBE2D4 protein
- 5: 40ng HIS-UBE2E1 protein
- 6: 40ng HIS-UBE2E2 protein
- 7: 40ng HIS-UBE2E3 protein
- 8: 40ng HIS-UBE2K protein
- 9: 40ng HIS-UBE2L3 protein
- 10: 40ng HIS-UBE2N protein
- 11: 40ng HIS-UBE2V1 protein
- 12: 40ng HIS-UBE2V2 protein

**GTX46884 WB Image**

WB analysis of Jurkat cells using GTX46884 UBE2E2 antibody at 0.125 μ g/ml.

Lane A : marker

Lane B : Jurkat cells



For full product information, images and publications, please visit our [website](#).