

UBE2J1 antibody, N-term

Cat. No. GTX46922

Host	Rabbit
Clonality	Polyclonal
Isotype	IgG
Applications	WB, IHC-P
Reactivity	Human

Package
100 µg

Applications

Application Note

*Optimal dilutions/concentrations should be determined by the researcher.

Suggested dilution	Recommended dilution
WB	0.2-2.5 ug/ml
IHC-P	2-10 ug/ml

Not tested in other applications.

Calculated MW 35 kDa. ([Note](#))

Properties

Form	Liquid
Buffer	PBS, 2% Sucrose
Preservative	0.09% Sodium azide
Storage	Store as concentrated solution. Centrifuge briefly prior to opening vial. For short-term storage (1-2 weeks), store at 4°C. For long-term storage, aliquot and store at -20°C or below. Avoid multiple freeze-thaw cycles.
Concentration	0.5-1 mg/ml (Please refer to the vial label for the specific concentration.)
Immunogen	A synthetic peptide corresponding to a N-terminal region of Human UBE2J1
Purification	Protein A purified
Conjugation	Unconjugated

Note

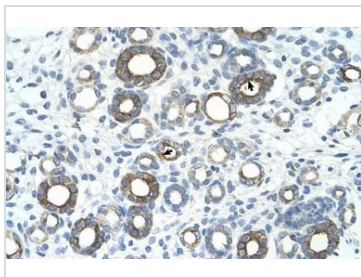
For laboratory research use only. Not for any clinical, therapeutic, or diagnostic use in humans or animals. Not for animal or human consumption.

Purchasers shall not, and agree not to enable third parties to, analyze, copy, reverse engineer or otherwise attempt to determine the structure or sequence of the product.



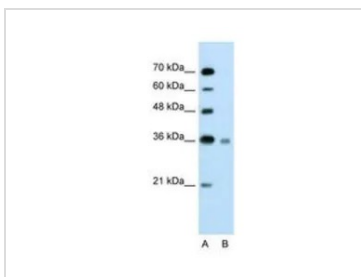
For full product information, images and publications, please visit our [website](#).

DATA IMAGES



GTX46922 IHC-P Image

IHC-P analysis of human kidney tissue using GTX46922 UBE2J1 antibody at 4.0-8.0µg/ml.

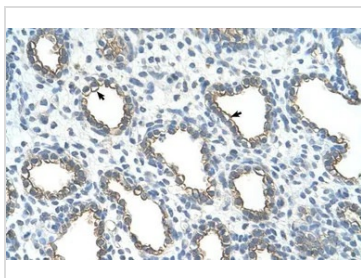


GTX46922 WB Image

WB analysis of Jurkat cells using GTX46922 UBE2J1 antibody at 2.5µg/ml.

Lane A: marker

Lane B: Jurkat cells



GTX46922 IHC-P Image

IHC-P analysis of human lung tissue using GTX46922 UBE2J1 antibody at 4.0-8.0µg/ml.



For full product information, images and publications, please visit our [website](#).