

## UBE2E3 antibody, N-term

**Cat. No. GTX46934**

<b>Host</b>	Rabbit
<b>Clonality</b>	Polyclonal
<b>Isotype</b>	IgG
<b>Applications</b>	WB
<b>Reactivity</b>	Human

**Package**  
50 µg

## Applications

**Application Note**

\*Optimal dilutions/concentrations should be determined by the researcher.

Suggested dilution	Recommended dilution
--------------------	----------------------

WB	0.2-2.5 ug/ml
----	---------------

Not tested in other applications.

<b>Calculated MW</b>	23 kDa. ( <a href="#">Note</a> )
----------------------	----------------------------------

## Properties

<b>Form</b>	Liquid
-------------	--------

<b>Buffer</b>	PBS, 2% Sucrose
---------------	-----------------

<b>Preservative</b>	0.09% Sodium azide
---------------------	--------------------

<b>Storage</b>	Store as concentrated solution. Centrifuge briefly prior to opening vial. For short-term storage (1-2 weeks), store at 4°C. For long-term storage, aliquot and store at -20°C or below. Avoid multiple freeze-thaw cycles.
----------------	--

<b>Concentration</b>	0.5-1 mg/ml (Please refer to the vial label for the specific concentration.)
----------------------	--

<b>Immunogen</b>	A synthetic peptide corresponding to a N-terminal region of Human UBE2E3
------------------	--

<b>Purification</b>	Affinity Purified
---------------------	-------------------

<b>Conjugation</b>	Unconjugated
--------------------	--------------

**Note**

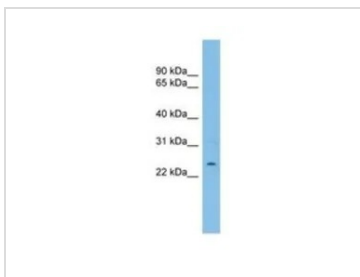
For laboratory research use only. Not for any clinical, therapeutic, or diagnostic use in humans or animals. Not for animal or human consumption.

Purchasers shall not, and agree not to enable third parties to, analyze, copy, reverse engineer or otherwise attempt to determine the structure or sequence of the product.

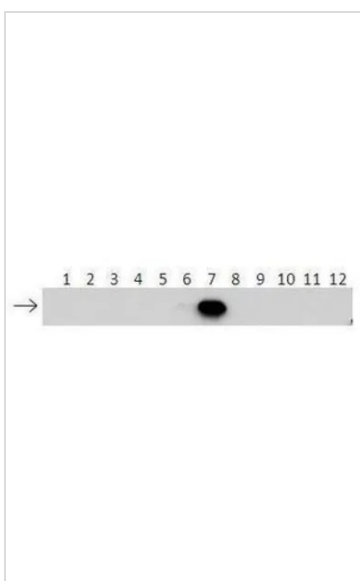


For full product information, images and publications, please visit our [website](#).

## DATA IMAGES

**GTX46934 WB Image**

WB analysis of HT1080 cells using GTX46934 UBE2E3 antibody at 0.2-1µg/ml.

**GTX46934 WB Image**

WB analysis of human UBE2E3 recombinant protein using GTX46934 UBE2E3 antibody at 1:500.

Lanes:

- 1: 40ng HIS-UBE2D1 protein
- 2: 40ng HIS-UBE2D2 protein
- 3: 40ng HIS-UBE2D3 protein
- 4: 40ng HIS-UBE2D4 protein
- 5: 40ng HIS-UBE2E1 protein
- 6: 40ng HIS-UBE2E2 protein
- 7: 40ng HIS-UBE2E3 protein
- 8: 40ng HIS-UBE2K protein
- 9: 40ng HIS-UBE2L3 protein
- 10: 40ng HIS-UBE2N protein
- 11: 40ng HIS-UBE2V1 protein
- 12: 40ng HIS-UBE2V2 protein



For full product information, images and publications, please visit our [website](#).