

UBE2L6 antibody, Internal

Cat. No. GTX46936

Host	Rabbit
Clonality	Polyclonal
Isotype	IgG
Applications	WB
Reactivity	Human

Package
50 µg

Applications

Application Note

*Optimal dilutions/concentrations should be determined by the researcher.

Suggested dilution	Recommended dilution
WB	0.2-2.5 ug/ml

Not tested in other applications.

Calculated MW 18 kDa. ([Note](#))

Properties

Form	Liquid
Buffer	PBS, 2% Sucrose
Preservative	0.09% Sodium azide
Storage	Store as concentrated solution. Centrifuge briefly prior to opening vial. For short-term storage (1-2 weeks), store at 4°C. For long-term storage, aliquot and store at -20°C or below. Avoid multiple freeze-thaw cycles.
Concentration	0.5-1 mg/ml (Please refer to the vial label for the specific concentration.)
Immunogen	A synthetic peptide corresponding to an Internal region of Human UBE2L6
Purification	Affinity Purified
Conjugation	Unconjugated

Note

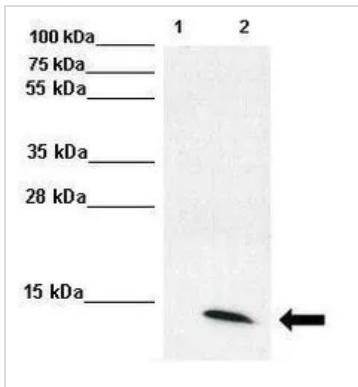
For laboratory research use only. Not for any clinical, therapeutic, or diagnostic use in humans or animals. Not for animal or human consumption.

Purchasers shall not, and agree not to enable third parties to, analyze, copy, reverse engineer or otherwise attempt to determine the structure or sequence of the product.



For full product information, images and publications, please visit our [website](#).

DATA IMAGES



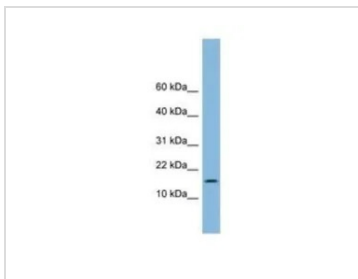
GTX46936 WB Image

WB analysis of IFN-gamma stimulated U6A cells using GTX46936 UBE2L6 antibody at 1:2000. Loading amount: 70ug.

Lane 1: U6A cell lysate

Lane 2: IFN-gamma stimulated U6A cell lysate

Cells were stimulated with IFN-gamma (50ng/ml) for 24hrs.



GTX46936 WB Image

WB analysis of human small intestine tissue using GTX46936 UBE2L6 antibody at 0.2-1µg/ml.



For full product information, images and publications, please visit our [website](#).