

UBE2D3 antibody, N-term

Cat. No. GTX46939

Host	Rabbit
Clonality	Polyclonal
Isotype	IgG
Applications	WB
Reactivity	Human

Package
50 µg

Applications

Application Note

*Optimal dilutions/concentrations should be determined by the researcher.

Suggested dilution	Recommended dilution
WB	0.2-2.5 ug/ml

Not tested in other applications.

Calculated MW 17 kDa. ([Note](#))

Properties

Form	Liquid
Buffer	PBS, 2% Sucrose
Preservative	0.09% Sodium azide
Storage	Store as concentrated solution. Centrifuge briefly prior to opening vial. For short-term storage (1-2 weeks), store at 4°C. For long-term storage, aliquot and store at -20°C or below. Avoid multiple freeze-thaw cycles.
Concentration	0.5-1 mg/ml (Please refer to the vial label for the specific concentration.)
Immunogen	A synthetic peptide corresponding to a N-terminal region of Human UBE2D3
Purification	Affinity Purified
Conjugation	Unconjugated

Note

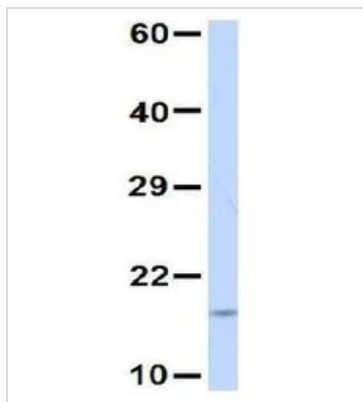
For laboratory research use only. Not for any clinical, therapeutic, or diagnostic use in humans or animals. Not for animal or human consumption.

Purchasers shall not, and agree not to enable third parties to, analyze, copy, reverse engineer or otherwise attempt to determine the structure or sequence of the product.



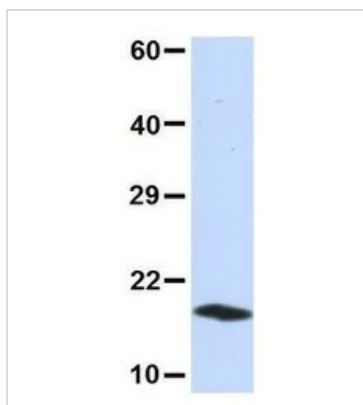
For full product information, images and publications, please visit our [website](#).

DATA IMAGES



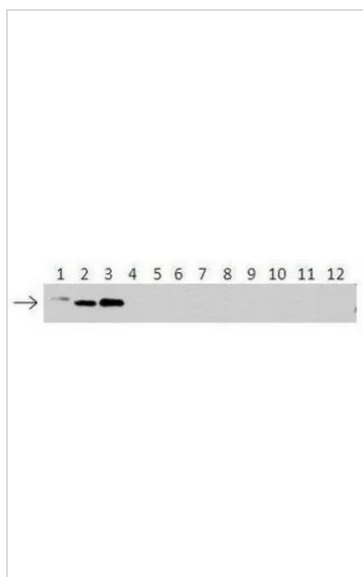
GTX46939 WB Image

WB analysis of human fetal liver tissue using GTX46939 UBE2D3 antibody at 1µg/ml.



GTX46939 WB Image

WB analysis of 293T cells using GTX46939 UBE2D3 antibody at 1µg/ml.



GTX46939 WB Image

WB analysis of human UBE2 recombinant protein using GTX46939 UBE2D3 antibody at 1:500.

Sample type:

- 1: 40ng HIS-UBE2D1 protein
- 2: 40ng HIS-UBE2D2 protein
- 3: 40ng HIS-UBE2D3 protein
- 4: 40ng HIS-UBE2D4 protein
- 5: 40ng HIS-UBE2E1 protein
- 6: 40ng HIS-UBE2E2 protein
- 7: 40ng HIS-UBE2E3 protein
- 8: 40ng HIS-UBE2K protein
- 9: 40ng HIS-UBE2L3 protein
- 10: 40ng HIS-UBE2N protein
- 11: 40ng HIS-UBE2V1 protein
- 12: 40ng HIS-UBE2V2 protein



For full product information, images and publications, please visit our [website](#).