

# SLC22A7 antibody, N-term

**Cat. No. GTX47049**

<b>Host</b>	Rabbit
<b>Clonality</b>	Polyclonal
<b>Isotype</b>	IgG
<b>Applications</b>	WB, IHC-P
<b>Reactivity</b>	Human

**Package**  
100 µg

## Applications

### Application Note

\*Optimal dilutions/concentrations should be determined by the researcher.

Suggested dilution	Recommended dilution
WB	Assay dependent
IHC-P	2-10 ug/ml

Not tested in other applications.

**Calculated MW** 60 kDa. ( [Note](#) )

## Properties

<b>Form</b>	Liquid
<b>Buffer</b>	PBS, 2% Sucrose
<b>Preservative</b>	0.09% Sodium azide
<b>Storage</b>	Store as concentrated solution. Centrifuge briefly prior to opening vial. For short-term storage (1-2 weeks), store at 4°C. For long-term storage, aliquot and store at -20°C or below. Avoid multiple freeze-thaw cycles.
<b>Concentration</b>	0.5-1 mg/ml (Please refer to the vial label for the specific concentration.)
<b>Immunogen</b>	A synthetic peptide corresponding to a N-terminal region of Human SLC22A7
<b>Purification</b>	Protein A purified
<b>Conjugation</b>	Unconjugated

### Note

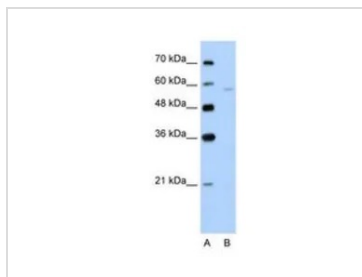
For laboratory research use only. Not for any clinical, therapeutic, or diagnostic use in humans or animals. Not for animal or human consumption.

Purchasers shall not, and agree not to enable third parties to, analyze, copy, reverse engineer or otherwise attempt to determine the structure or sequence of the product.



For full product information, images and publications, please visit our [website](#).

## DATA IMAGES

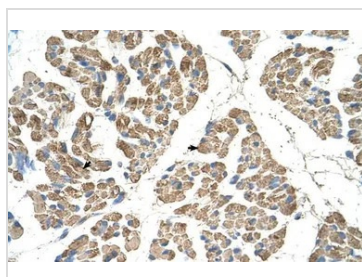


### GTX47049 WB Image

WB analysis of Jurkat cells using GTX47049 SLC22A7 antibody at 5.0µg/ml.

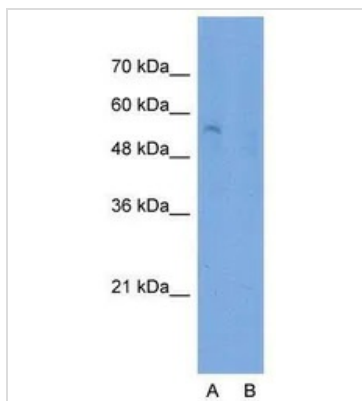
Lane A : marker

Lane B : Jurkat cells



### GTX47049 IHC-P Image

IHC-P analysis of human muscle tissue using GTX47049 SLC22A7 antibody at 4.0-8.0µg/ml.



### GTX47049 WB Image

WB analysis of Jurkat cells using GTX47049 SLC22A7 antibody at 2.5µg/ml.

Lane A: Primary antibody

Lane B: Primary antibody blocked with peptide



For full product information, images and publications, please visit our [website](https://www.genetex.com).