

## SLC22A1 antibody, N-term

Cat. No. GTX47150

Host	Rabbit
Clonality	Polyclonal
Isotype	IgG
Applications	WB, IHC-P
Reactivity	Human

References ( 1 )

Package

100 µg

## Applications

## Application Note

\*Optimal dilutions/concentrations should be determined by the researcher.

Suggested dilution	Recommended dilution
WB	0.2-2.5 ug/ml
IHC-P	2-10 ug/ml

Not tested in other applications.

Calculated MW 61 kDa. ( [Note](#) )

## Properties

Form	Liquid
Buffer	PBS, 2% Sucrose
Preservative	0.09% Sodium azide
Storage	Store as concentrated solution. Centrifuge briefly prior to opening vial. For short-term storage (1-2 weeks), store at 4°C. For long-term storage, aliquot and store at -20°C or below. Avoid multiple freeze-thaw cycles.
Concentration	0.5-1 mg/ml (Please refer to the vial label for the specific concentration.)
Immunogen	A synthetic peptide corresponding to a N-terminal region of Human SLC22A1
Purification	Protein A purified
Conjugation	Unconjugated

## Note

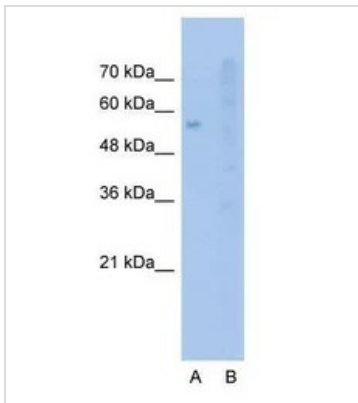
For laboratory research use only. Not for any clinical, therapeutic, or diagnostic use in humans or animals. Not for animal or human consumption.

Purchasers shall not, and agree not to enable third parties to, analyze, copy, reverse engineer or otherwise attempt to determine the structure or sequence of the product.



For full product information, images and publications, please visit our [website](#).

## DATA IMAGES

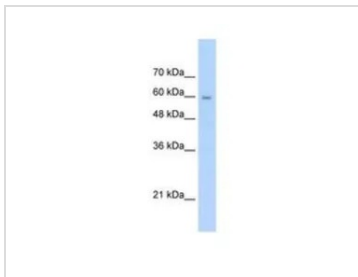


### GTx47150 WB Image

WB analysis of Jurkat cells using GTx47150 SLC22A1 antibody at 2.5µg/ml.

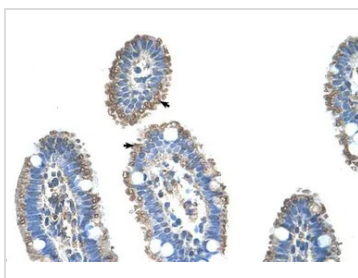
Lane A : Primary antibody

Lane B : Primary antibody + Blocking peptide



### GTx47150 WB Image

WB analysis of Jurkat cells using GTx47150 SLC22A1 antibody at 2.5µg/ml.



### GTx47150 IHC-P Image

IHC-P analysis of human intestine tissue using GTx47150 SLC22A1 antibody at 4.0-8.0µg/ml.



For full product information, images and publications, please visit our [website](https://www.genetex.com).