

SURF6 antibody, Internal

Cat. No. GTX47336

Host	Rabbit
Clonality	Polyclonal
Isotype	IgG
Applications	WB, IHC-P
Reactivity	Human

Package
100 µg

Applications

Application Note

*Optimal dilutions/concentrations should be determined by the researcher.

Suggested dilution	Recommended dilution
WB	0.2-2.5 ug/ml
IHC-P	2-10 ug/ml

Not tested in other applications.

Calculated MW 41 kDa. ([Note](#))

Properties

Form	Liquid
Buffer	PBS, 2% Sucrose
Preservative	0.09% Sodium azide
Storage	Store as concentrated solution. Centrifuge briefly prior to opening vial. For short-term storage (1-2 weeks), store at 4°C. For long-term storage, aliquot and store at -20°C or below. Avoid multiple freeze-thaw cycles.
Concentration	0.5-1 mg/ml (Please refer to the vial label for the specific concentration.)
Immunogen	A synthetic peptide corresponding to an Internal region of Human SURF6
Purification	Protein A purified
Conjugation	Unconjugated

Note

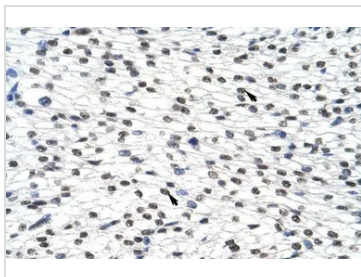
For laboratory research use only. Not for any clinical, therapeutic, or diagnostic use in humans or animals. Not for animal or human consumption.

Purchasers shall not, and agree not to enable third parties to, analyze, copy, reverse engineer or otherwise attempt to determine the structure or sequence of the product.



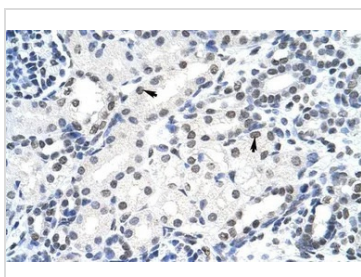
For full product information, images and publications, please visit our [website](#).

DATA IMAGES



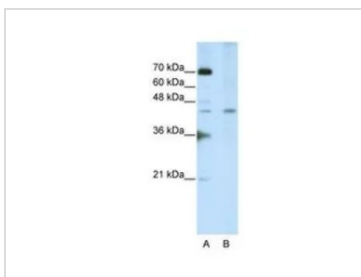
GTx47336 IHC-P Image

IHC-P analysis of human heart tissue using GTx47336 SURF6 antibody at 4.0-8.0µg/ml.



GTx47336 IHC-P Image

IHC-P analysis of human kidney tissue using GTx47336 SURF6 antibody at 4.0-8.0µg/ml.



GTx47336 WB Image

WB analysis of Jurkat cells using GTx47336 SURF6 antibody at 2.5µg/ml.

Lane A : marker

Lane B : Jurkat cells



For full product information, images and publications, please visit our [website](#).