

CTAGE5 antibody, N-term

Cat. No. GTX47354

Host	Rabbit
Clonality	Polyclonal
Isotype	IgG
Applications	WB, IHC-P
Reactivity	Human

Package
50 µg

Applications

Application Note

*Optimal dilutions/concentrations should be determined by the researcher.

Suggested dilution	Recommended dilution
WB	0.2-2.5 ug/ml
IHC-P	2-10 ug/ml

Not tested in other applications.

Calculated MW 160 kDa. ([Note](#))

Properties

Form	Liquid
Buffer	PBS, 2% Sucrose
Preservative	0.09% Sodium azide
Storage	Store as concentrated solution. Centrifuge briefly prior to opening vial. For short-term storage (1-2 weeks), store at 4°C. For long-term storage, aliquot and store at -20°C or below. Avoid multiple freeze-thaw cycles.
Concentration	0.5-1 mg/ml (Please refer to the vial label for the specific concentration.)
Immunogen	A synthetic peptide corresponding to a N-terminal region of Human CTAGE5
Purification	Affinity Purified
Conjugation	Unconjugated

Note

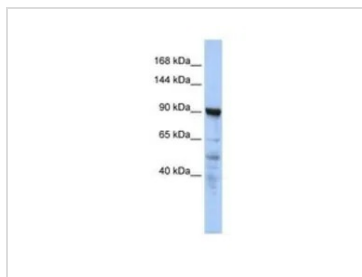
For laboratory research use only. Not for any clinical, therapeutic, or diagnostic use in humans or animals. Not for animal or human consumption.

Purchasers shall not, and agree not to enable third parties to, analyze, copy, reverse engineer or otherwise attempt to determine the structure or sequence of the product.



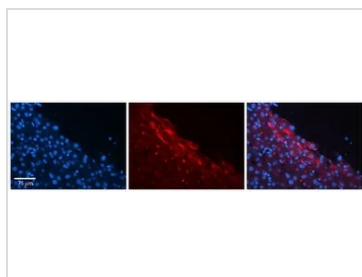
For full product information, images and publications, please visit our [website](#).

DATA IMAGES



GTx47354 WB Image

WB analysis of HepG2 cells using GTx47354 CTAGE5 antibody at 0.2-1 µg/ml.



GTx47354 IHC-P Image

IHC-P analysis of human liver tissue using GTx47354 CTAGE5 antibody at 1:100. Left to right: DAPI, CTAGE5, Merge. Low pH, heat-induced antigen retrieval method utilizing Sodium Citrate buffer was performed.



For full product information, images and publications, please visit our [website](#).