

PRMT8 antibody, C-term

Cat. No. GTX47431

Host	Rabbit
Clonality	Polyclonal
Isotype	IgG
Applications	WB
Reactivity	Human

Package
100 µg

Applications

Application Note

*Optimal dilutions/concentrations should be determined by the researcher.

Suggested dilution **Recommended dilution**

WB 0.2-2.5 µg/ml

Not tested in other applications.

Calculated MW 45 kDa. ([Note](#))

Properties

Form Liquid**Buffer** PBS, 2% Sucrose**Preservative** 0.09% Sodium azide**Storage** Store as concentrated solution. Centrifuge briefly prior to opening vial. For short-term storage (1-2 weeks), store at 4°C. For long-term storage, aliquot and store at -20°C or below. Avoid multiple freeze-thaw cycles.**Concentration** 0.5-1 mg/ml (Please refer to the vial label for the specific concentration.)**Immunogen** A synthetic peptide corresponding to a C-terminal region of Human PRMT8**Purification** Protein A purified**Conjugation** Unconjugated**Note**

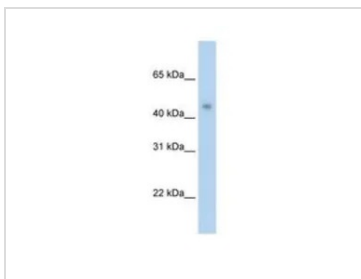
For laboratory research use only. Not for any clinical, therapeutic, or diagnostic use in humans or animals. Not for animal or human consumption.

Purchasers shall not, and agree not to enable third parties to, analyze, copy, reverse engineer or otherwise attempt to determine the structure or sequence of the product.



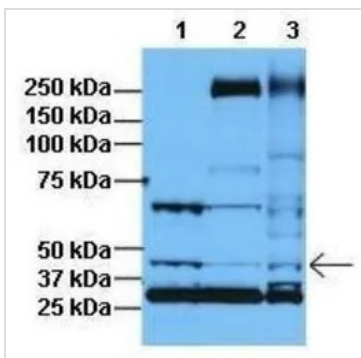
For full product information, images and publications, please visit our [website](#).

DATA IMAGES



GTX47431 WB Image

WB analysis of transfected 293T cells using GTX47431 PRMT8 antibody at 2.5µg/ml.



GTX47431 WB Image

WB analysis of HeLa, HFF, and U2OS cells using GTX47431 PRMT8 antibody at 1:1000. Loading amount: 30µg.

Lanes:

- 1: HeLa cell lysate
- 2: HFF cell lysate
- 3: U2OS cell lysate



For full product information, images and publications, please visit our [website](#).