

PRMT7 antibody, N-term

Cat. No. GTX47432

Host	Rabbit
Clonality	Polyclonal
Isotype	IgG
Applications	WB
Reactivity	Human

Package
 50 µg

Applications
Application Note

*Optimal dilutions/concentrations should be determined by the researcher.

Suggested dilution	Recommended dilution
--------------------	----------------------

WB	0.2-2.5 ug/ml
----	---------------

Not tested in other applications.

Calculated MW	78 kDa. (Note)
----------------------	----------------------------------

Properties

Form	Liquid
-------------	--------

Buffer	PBS, 2% Sucrose
---------------	-----------------

Preservative	0.09% Sodium azide
---------------------	--------------------

Storage	Store as concentrated solution. Centrifuge briefly prior to opening vial. For short-term storage (1-2 weeks), store at 4°C. For long-term storage, aliquot and store at -20°C or below. Avoid multiple freeze-thaw cycles.
----------------	--

Concentration	0.5-1 mg/ml (Please refer to the vial label for the specific concentration.)
----------------------	--

Immunogen	A synthetic peptide corresponding to a N-terminal region of Human PRMT7
------------------	---

Purification	Affinity Purified
---------------------	-------------------

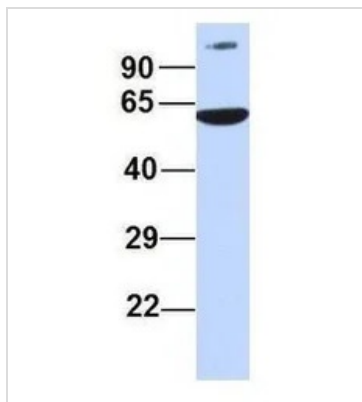
Conjugation	Unconjugated
--------------------	--------------

Note	For laboratory research use only. Not for any clinical, therapeutic, or diagnostic use in humans or animals. Not for animal or human consumption.
-------------	---

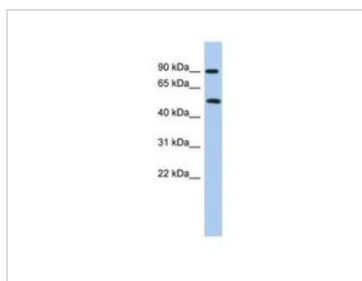
Note	Purchasers shall not, and agree not to enable third parties to, analyze, copy, reverse engineer or otherwise attempt to determine the structure or sequence of the product.
-------------	---


 For full product information, images and publications, please visit our [website](#).

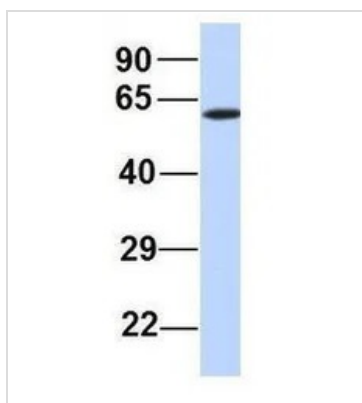
DATA IMAGES

**GTX47432 WB Image**

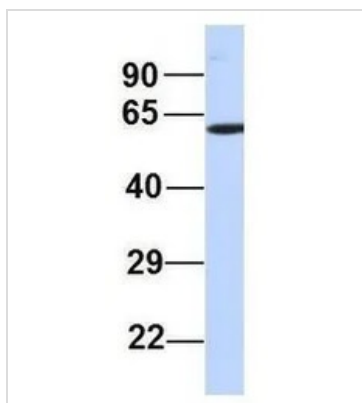
WB analysis of 293T cells using GTX47432 PRMT7 antibody at 1 µg/ml.

**GTX47432 WB Image**

WB analysis of human fetal liver tissue using GTX47432 PRMT7 antibody at 0.2-1 µg/ml.

**GTX47432 WB Image**

WB analysis of human fetal muscle tissue using GTX47432 PRMT7 antibody at 1 µg/ml.

**GTX47432 WB Image**

WB analysis of human placenta tissue using GTX47432 PRMT7 antibody at 1 µg/ml.



For full product information, images and publications, please visit our [website](#).