

NUCB2 antibody, Internal

Cat. No. GTX47487

Host	Rabbit
Clonality	Polyclonal
Isotype	IgG
Applications	WB, IHC-P
Reactivity	Human, Mouse, Dog

Package
100 µg

Applications

Application Note

*Optimal dilutions/concentrations should be determined by the researcher.

Suggested dilution	Recommended dilution
WB	0.2-2.5 ug/ml
IHC-P	2-10 ug/ml

Not tested in other applications.

Calculated MW 50 kDa. ([Note](#))

Properties

Form	Liquid
Buffer	PBS, 2% Sucrose
Preservative	0.09% Sodium azide
Storage	Store as concentrated solution. Centrifuge briefly prior to opening vial. For short-term storage (1-2 weeks), store at 4°C. For long-term storage, aliquot and store at -20°C or below. Avoid multiple freeze-thaw cycles.
Concentration	0.5-1 mg/ml (Please refer to the vial label for the specific concentration.)
Immunogen	A synthetic peptide corresponding to an Internal region of Human NUCB2
Purification	Protein A purified
Conjugation	Unconjugated

Note

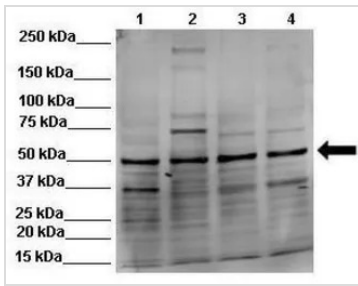
For laboratory research use only. Not for any clinical, therapeutic, or diagnostic use in humans or animals. Not for animal or human consumption.

Purchasers shall not, and agree not to enable third parties to, analyze, copy, reverse engineer or otherwise attempt to determine the structure or sequence of the product.



For full product information, images and publications, please visit our [website](#).

DATA IMAGES



GTx47487 WB Image

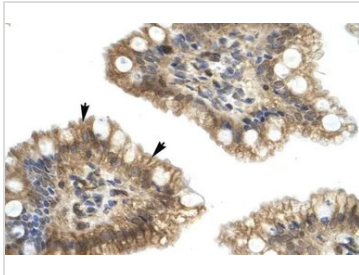
WB analysis of HEK293, MDCK, NMuMG, and MDA-MB-231 cells using GTx47487 NUCB2 antibody at 1:1000. Loading amount: 50 µg.

Lane 1 : HEK293

Lane 2 : MDCK

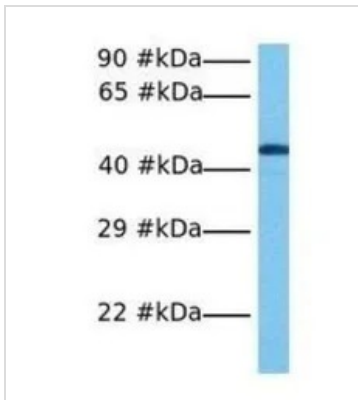
Lane 3 : NMuMG

Lane 4 : MDA-MB-231



GTx47487 IHC-P Image

IHC-P analysis of human intestine tissue using GTx47487 NUCB2 antibody at 4.0-8.0 µg/ml.



GTx47487 WB Image

WB analysis of COLO205 cells using GTx47487 NUCB2 antibody at 1 µg/ml.



For full product information, images and publications, please visit our [website](https://www.genetex.com).