

Beta Arrestin 2 antibody, Internal

Cat. No. GTX47600

Host	Goat
Clonality	Polyclonal
Isotype	IgG
Applications	WB, IHC-P
Reactivity	Human, Mouse, Rat

Package
100 µg

Applications

Application Note

*Optimal dilutions/concentrations should be determined by the researcher.

Suggested dilution	Recommended dilution
WB	0.1-0.3µg/ml
IHC-P	Assay dependent

Not tested in other applications.

Calculated MW 46 kDa. ([Note](#))

Product Note This antibody is expected to recognise both reported isoforms 1, 2, 3, 5 and 6 (NP_004304.1; NP_945355.1; NP_001244257.1; NP_001244259.1; NP_001244260.1). No crossreactivity is expected with Arrestin beta 1.

Properties

Form	Liquid
Buffer	TBS, 0.5% BSA
Preservative	0.02% Sodium azide
Storage	Store as concentrated solution. Centrifuge briefly prior to opening vial. For short-term storage (1-2 weeks), store at 4°C. For long-term storage, aliquot and store at -20°C or below. Avoid multiple freeze-thaw cycles.
Concentration	0.50 mg/ml (Please refer to the vial label for the specific concentration.)
Immunogen	Peptide with sequence C-HDHIPLRPQS, from the internal region of the protein sequence according to NP_004304.1; NP_945355.1; NP_001244257.1; NP_001244259.1; NP_001244260.1.
Purification	Purified by ammonium sulphate precipitation followed by antigen affinity chromatography
Conjugation	Unconjugated



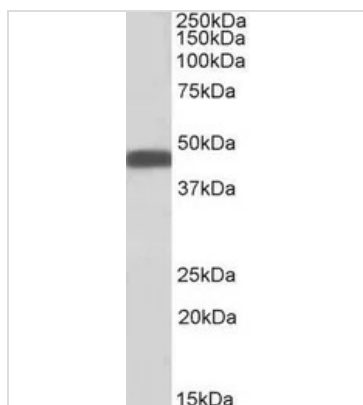
For full product information, images and publications, please visit our [website](#).

For laboratory research use only. Not for any clinical, therapeutic, or diagnostic use in humans or animals. Not for animal or human consumption.

Note

Purchasers shall not, and agree not to enable third parties to, analyze, copy, reverse engineer or otherwise attempt to determine the structure or sequence of the product.

DATA IMAGES

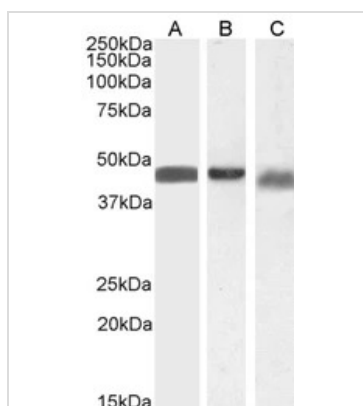


GTX47600 WB Image

WB analysis of human spleen lysate using GTX47600 Beta Arrestin 2 antibody, Internal.

Dilution : 0.1µg/ml

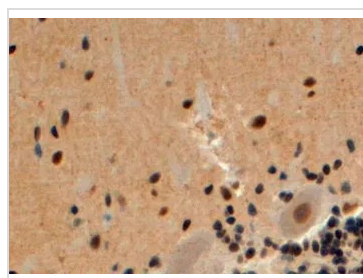
Loading : 35µg protein in RIPA buffer



GTX47600 WB Image

WB analysis of human spleen (A), mouse brain (B) and mouse spleen (C) lysate (35µg protein in RIPA buffer) using GTX47600 Beta Arrestin 2 antibody, Internal.

Dilution : 1µg/ml



GTX47600 IHC-P Image

IHC-P analysis of human cerebellum using GTX47600 Beta Arrestin 2 antibody, Internal.

Antigen retrieval : citrate buffer pH 6

Dilution : 4µg/ml



For full product information, images and publications, please visit our [website](https://www.genetex.com).