

KCNK13 antibody, C-term

Cat. No. GTX47656

Host	Rabbit
Clonality	Polyclonal
Isotype	IgG
Applications	WB, ICC/IF, IHC-P
Reactivity	Human, Dog

Package

50 µg

Applications

Application Note

*Optimal dilutions/concentrations should be determined by the researcher.

Suggested dilution	Recommended dilution
WB	0.2-2.5 ug/ml
ICC/IF	Assay dependent
IHC-P	2-10 ug/ml

Not tested in other applications.

Calculated MW 45 kDa. ([Note](#))

Properties

Form	Liquid
Buffer	PBS, 2% Sucrose
Preservative	0.09% Sodium azide
Storage	Store as concentrated solution. Centrifuge briefly prior to opening vial. For short-term storage (1-2 weeks), store at 4°C. For long-term storage, aliquot and store at -20°C or below. Avoid multiple freeze-thaw cycles.
Concentration	0.5-1 mg/ml (Please refer to the vial label for the specific concentration.)
Immunogen	A synthetic peptide corresponding to a C-terminal region of Human KCNK13
Purification	Affinity Purified
Conjugation	Unconjugated

Note

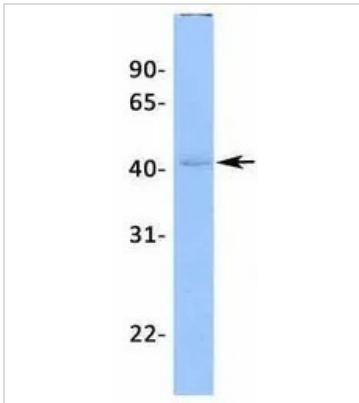
For laboratory research use only. Not for any clinical, therapeutic, or diagnostic use in humans or animals. Not for animal or human consumption.

Purchasers shall not, and agree not to enable third parties to, analyze, copy, reverse engineer or otherwise attempt to determine the structure or sequence of the product.



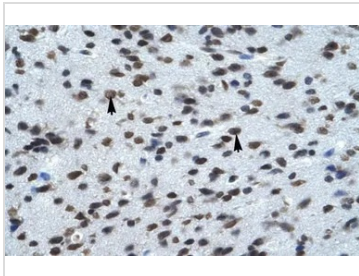
For full product information, images and publications, please visit our [website](#).

DATA IMAGES



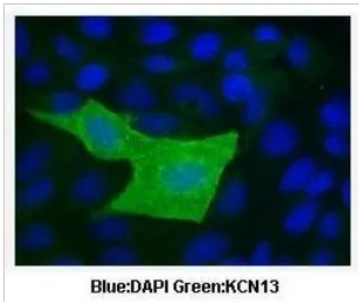
GTx47656 WB Image

WB analysis of human B lymphoblast cells using GTx47656 KCNK13 antibody at 1µg/ml.



GTx47656 IHC-P Image

IHC-P analysis of human brain tissue using GTx47656 KCNK13 antibody at 4.0-8.0µg/ml.

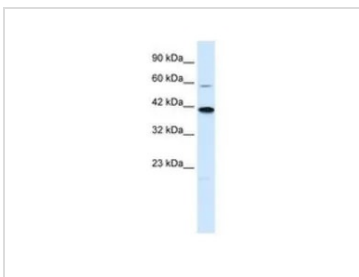


GTx47656 ICC/IF Image

ICC/IF analysis of MDCK cells using GTx47656 KCNK13 antibody at 1:100.

Blue : DAPI

Green : KCN13



GTx47656 WB Image

WB analysis of Jurkat cells using GTx47656 KCNK13 antibody at 0.12µg/ml.



For full product information, images and publications, please visit our [website](#).