

Kir2.2 antibody, Internal

Cat. No. GTX47662

Host	Rabbit
Clonality	Polyclonal
Isotype	IgG
Applications	WB, IHC-P
Reactivity	Human

Package
50 µg

Applications

Application Note

*Optimal dilutions/concentrations should be determined by the researcher.

Suggested dilution	Recommended dilution
WB	0.2-2.5 ug/ml
IHC-P	2-10 ug/ml

Not tested in other applications.

Calculated MW 49 kDa. ([Note](#))

Properties

Form	Liquid
Buffer	PBS, 2% Sucrose
Preservative	0.09% Sodium azide
Storage	Store as concentrated solution. Centrifuge briefly prior to opening vial. For short-term storage (1-2 weeks), store at 4°C. For long-term storage, aliquot and store at -20°C or below. Avoid multiple freeze-thaw cycles.
Concentration	0.5-1 mg/ml (Please refer to the vial label for the specific concentration.)
Immunogen	A synthetic peptide corresponding to an Internal region of Human Kir2.2.
Purification	Affinity Purified
Conjugation	Unconjugated

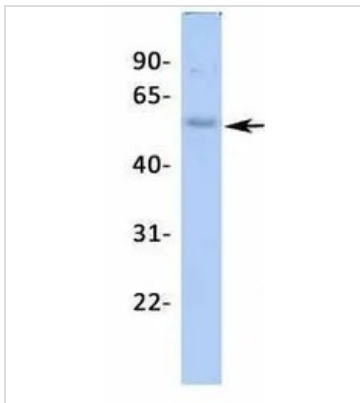
Note

For laboratory research use only. Not for any clinical, therapeutic, or diagnostic use in humans or animals. Not for animal or human consumption.

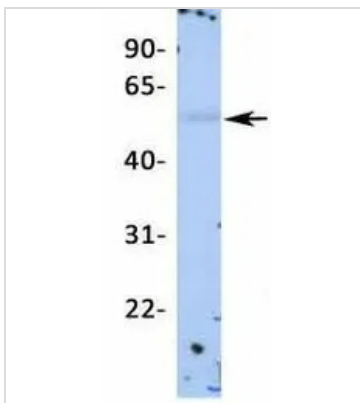
Purchasers shall not, and agree not to enable third parties to, analyze, copy, reverse engineer or otherwise attempt to determine the structure or sequence of the product.



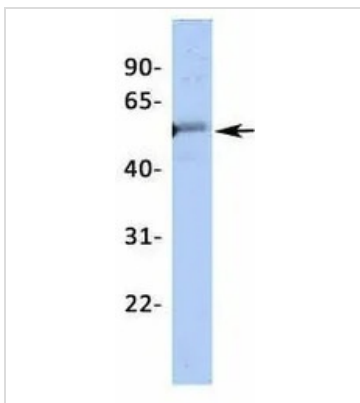
For full product information, images and publications, please visit our [website](#).

DATA IMAGES

GTX47662 WB Image

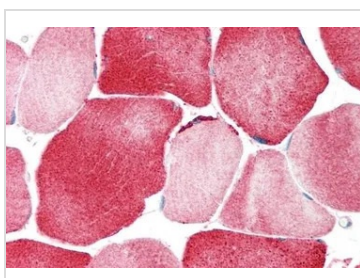
WB analysis of human fetal lung tissue using GTX47662 KCNJ12 antibody at 1µg/ml.


GTX47662 WB Image

WB analysis of human placenta tissue using GTX47662 KCNJ12 antibody at 1µg/ml.


GTX47662 WB Image

WB analysis of human fetal heart tissue using GTX47662 KCNJ12 antibody at 1µg/ml.


GTX47662 IHC-P Image

IHC-P analysis of human skeletal muscle tissue using GTX47662 KCNJ12 antibody at 5µg/ml.



For full product information, images and publications, please visit our [website](https://www.genetex.com).