

GLUT5 antibody

Cat. No. GTX47800

Host	Rabbit
Clonality	Polyclonal
Isotype	IgG
Applications	WB, IHC-P, IHC-Fr, IP, ELISA
Reactivity	Human, Monkey

Package
100 µg

Applications

Application Note

*Optimal dilutions/concentrations should be determined by the researcher.

Suggested dilution	Recommended dilution
WB	1:1000
IHC-P	Assay dependent
IHC-Fr	Assay dependent
IP	1:200
ELISA	1:4000

Not tested in other applications.

Calculated MW 55 kDa. ([Note](#))

Product Note This antibody does not react with GLUT1, 2, 3, or 4.

Properties

Form	Liquid
Buffer	Tris/Glycine, 0.5% BSA, 30% Glycerol
Preservative	0.02% Sodium azide
Storage	Store as concentrated solution. Centrifuge briefly prior to opening vial. For short-term storage (1-2 weeks), store at 4°C. For long-term storage, aliquot and store at -20°C or below. Avoid multiple freeze-thaw cycles.
Concentration	0.7 mg/ml (Please refer to the vial label for the specific concentration.)
Immunogen	Synthetic peptide corresponding to C terminal amino acids 490-500 of Human Glucose Transporter 5 GLUT5. A cysteine residue was included at the N-terminus of the peptide to accommodate KLH conjugation. Sequence:ELKEPPVTSEQ
Purification	Purified by affinity chromatography
Conjugation	Unconjugated

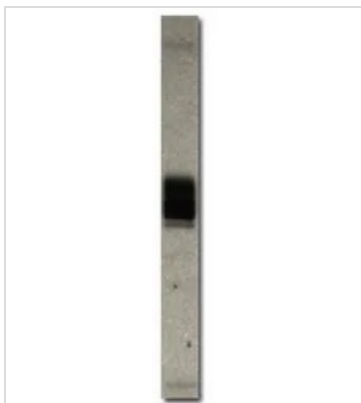
For full product information, images and publications, please visit our [website](#).

For laboratory research use only. Not for any clinical, therapeutic, or diagnostic use in humans or animals. Not for animal or human consumption.

Note

Purchasers shall not, and agree not to enable third parties to, analyze, copy, reverse engineer or otherwise attempt to determine the structure or sequence of the product.

DATA IMAGES



GTx47800 WB Image

WB analysis of GLUT5 recombinant protein using GTx47800 GLUT5 antibody.

Dilution : 1:500



For full product information, images and publications, please visit our [website](#).