

Lactase antibody

Cat. No. GTX47808

Host	Rabbit
Clonality	Polyclonal
Isotype	IgG
Applications	WB, ICC/IF, IHC-P, IP, ELISA
Reactivity	Human, Mouse, Rat

Package
100 µg

Applications

Application Note

*Optimal dilutions/concentrations should be determined by the researcher.

Suggested dilution	Recommended dilution
WB	1:500
ICC/IF	1:50
IHC-P	Assay dependent
IP	1:200
ELISA	1:10000

Not tested in other applications.

Properties

Form	Liquid
Buffer	Tris/Glycine, 0.5% BSA, 30% Glycerol
Preservative	0.02% Sodium azide
Storage	Store as concentrated solution. Centrifuge briefly prior to opening vial. For short-term storage (1-2 weeks), store at 4°C. For long-term storage, aliquot and store at -20°C or below. Avoid multiple freeze-thaw cycles.
Concentration	0.65-0.87 mg/ml (Please refer to the vial label for the specific concentration.)
Immunogen	Synthetic peptide taken within amino acid region 1080-1130 on rat Lactase protein.
Purification	Purified by affinity chromatography
Conjugation	Unconjugated

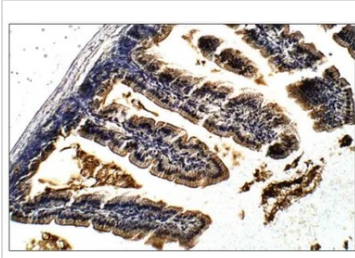
Note

For laboratory research use only. Not for any clinical, therapeutic, or diagnostic use in humans or animals. Not for animal or human consumption.

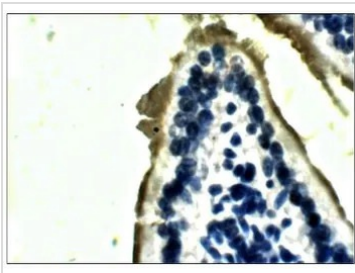
Purchasers shall not, and agree not to enable third parties to, analyze, copy, reverse engineer or otherwise attempt to determine the structure or sequence of the product.



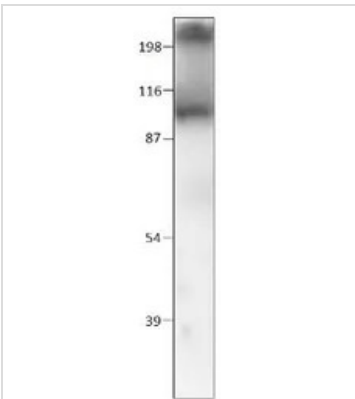
For full product information, images and publications, please visit our [website](#).

DATA IMAGES

GTX47808 IHC-P Image

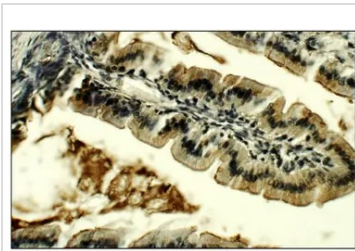
IHC-P analysis of mouse intestine tissue using GTX47808 Lactase antibody.
Dilution : 1:100


GTX47808 IHC-P Image

IHC-P analysis of mouse intestine tissue using GTX47808 Lactase antibody.
Dilution : 1:100


GTX47808 WB Image

WB analysis of rat brush border membrane lysates using GTX47808 Lactase antibody.
Dilution : 1:500


GTX47808 IHC-P Image

IHC-P analysis of mouse intestine tissue using GTX47808 Lactase antibody.
Dilution : 1:50



For full product information, images and publications, please visit our [website](https://www.genetex.com).