

Aquaporin 4 antibody

Cat. No. GTX47920

Host	Rabbit
Clonality	Polyclonal
Isotype	IgG
Applications	WB, ICC/IF, IHC-P, IP, ELISA
Reactivity	Human, Mouse, Rat, Sheep, Bovine

Package
100 µg

Applications

Application Note

*Optimal dilutions/concentrations should be determined by the researcher.

Suggested dilution	Recommended dilution
WB	1:500
ICC/IF	1:100
IHC-P	Assay dependent
IP	1:200
ELISA	1:10000

Not tested in other applications.

Calculated MW 34 kDa. ([Note](#))

Properties

Form	Liquid
Buffer	Tris/Glycine, 0.5% BSA, 30% Glycerol
Preservative	0.02% Sodium azide
Storage	Store as concentrated solution. Centrifuge briefly prior to opening vial. For short-term storage (1-2 weeks), store at 4°C. For long-term storage, aliquot and store at -20°C or below. Avoid multiple freeze-thaw cycles.
Concentration	0.50-0.62 mg/ml (Please refer to the vial label for the specific concentration.)
Immunogen	Synthetic peptide taken within amino acid region 300-323 on rat Aquaporin 4 protein.
Purification	Purified by affinity chromatography
Conjugation	Unconjugated

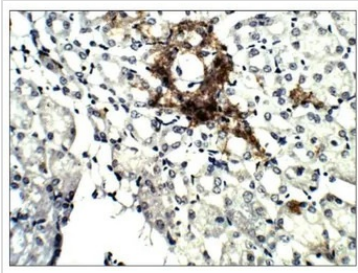


For full product information, images and publications, please visit our [website](#).

For laboratory research use only. Not for any clinical, therapeutic, or diagnostic use in humans or animals. Not for animal or human consumption.

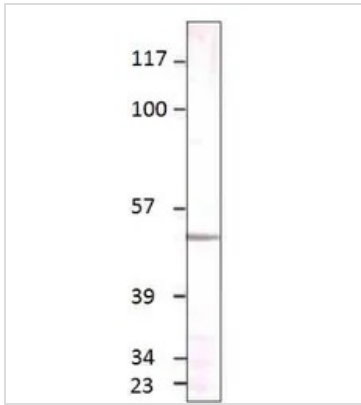
Note
 Purchasers shall not, and agree not to enable third parties to, analyze, copy, reverse engineer or otherwise attempt to determine the structure or sequence of the product.

DATA IMAGES



GTX47920 IHC-P Image

IHC-P analysis of rat kidney tissue using GTX47920 Aquaporin 4 antibody.
 Dilution : 1:100



GTX47920 WB Image

WB analysis of Aquaporin 4 recombinant protein using GTX47920 Aquaporin 4 antibody.
 Dilution : 1:500



For full product information, images and publications, please visit our [website](#).