

# Renilla Luciferase antibody

**Cat. No. GTX47953**

<b>Host</b>	Rabbit
<b>Clonality</b>	Polyclonal
<b>Isotype</b>	IgG
<b>Applications</b>	WB, ICC/IF, IP
<b>Reactivity</b>	Renilla reniformis

References ( 2 )

Package

100 µl

## Applications

### Application Note

\*Optimal dilutions/concentrations should be determined by the researcher.

Suggested dilution	Recommended dilution
WB	Assay dependent
ICC/IF	Assay dependent
IP	Assay dependent

Not tested in other applications.

## Properties

<b>Form</b>	Liquid
<b>Buffer</b>	PBS, 50% Glycerol
<b>Preservative</b>	No preservatives
<b>Storage</b>	Store as concentrated solution. Centrifuge briefly prior to opening vial. For short-term storage (1-2 weeks), store at 4°C. For long-term storage, aliquot and store at -20°C or below. Avoid multiple freeze-thaw cycles.
<b>Concentration</b>	Batch dependent (Please refer to the vial label for the specific concentration.)
<b>Immunogen</b>	Recombinant Renilla Luciferase
<b>Purification</b>	Purified by antigen-affinity chromatography
<b>Conjugation</b>	Unconjugated

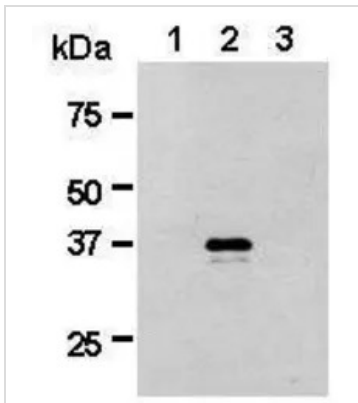
### Note

For laboratory research use only. Not for any clinical, therapeutic, or diagnostic use in humans or animals. Not for animal or human consumption.

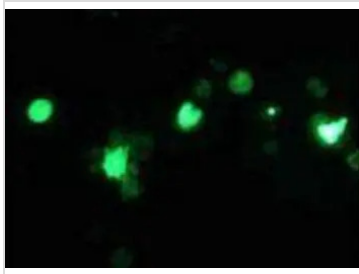
Purchasers shall not, and agree not to enable third parties to, analyze, copy, reverse engineer or otherwise attempt to determine the structure or sequence of the product.



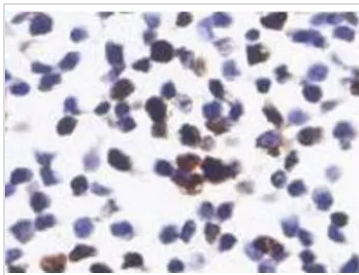
For full product information, images and publications, please visit our [website](#).

**DATA IMAGES**

**GTX47953 WB Image**

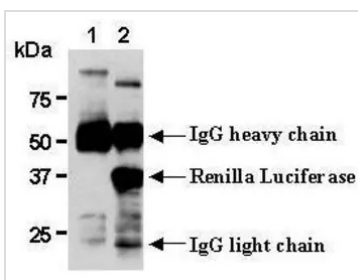
WB analysis of (1) firefly Luciferase or (2) renilla luciferase-transfected cells or (3) untransfected cells using GTX47953 Renilla Luciferase antibody.


**GTX47953 ICC/IF Image**

ICC/IF analysis of transfected cells using GTX47953 Renilla Luciferase antibody.


**GTX47953 ICC/IF Image**

ICC/IF analysis of transfected cells using GTX47953 Renilla Luciferase antibody.


**GTX47953 IP Image**

IP analysis of transfected cell lysate using (1) rabbit IgG isotype control antibody or (2) GTX47953 Renilla Luciferase antibody.



For full product information, images and publications, please visit our [website](https://www.genetex.com).