

SSEA-1 / CD15 antibody [MC-480]

Cat. No. GTX48035

Host	Mouse
Clonality	Monoclonal
Isotype	IgM
Applications	WB, ICC/IF, IHC-P, IHC-Fr, FCM
Reactivity	Human, Mouse, Rat, Pig

References (4)

Package

100 µg

Applications

Application Note

*Optimal dilutions/concentrations should be determined by the researcher.

Suggested dilution	Recommended dilution
WB	2 µg/ml
ICC/IF	1:50 - 1:200
IHC-P	1:50 - 1:200
IHC-Fr	1:50 - 1:200
FCM	1:50 - 1:200

Not tested in other applications.

Properties

Form	Liquid
Buffer	Tris-Glycine, 150mM NaCl
Preservative	0.05% Sodium azide
Storage	Store as concentrated solution. Centrifuge briefly prior to opening vial. For short-term storage (1-2 weeks), store at 4°C. For long-term storage, aliquot and store at -20°C or below. Avoid multiple freeze-thaw cycles.
Concentration	1 mg/ml (Please refer to the vial label for the specific concentration.)
Immunogen	F9 tetracarcinoma stem cells (X-irradiated).
Purification	Purified IgM
Conjugation	Unconjugated

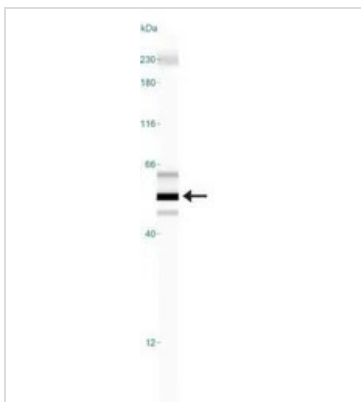
Note

For laboratory research use only. Not for any clinical, therapeutic, or diagnostic use in humans or animals. Not for animal or human consumption.

Purchasers shall not, and agree not to enable third parties to, analyze, copy, reverse engineer or otherwise attempt to determine the structure or sequence of the product.

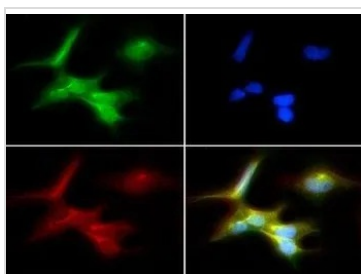
For full product information, images and publications, please visit our [website](#).

DATA IMAGES



GTX48035 WB Image

WB analysis of human brain tissue lysate using GTX48035 SSEA-1 antibody[MC-480].



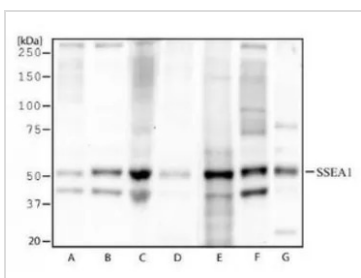
GTX48035 ICC/IF Image

ICC/IF analysis of NTERA-2 cells using GTX48035 SSEA-1 antibody[MC-480].

Green : primary antibody

Red : Tubulin

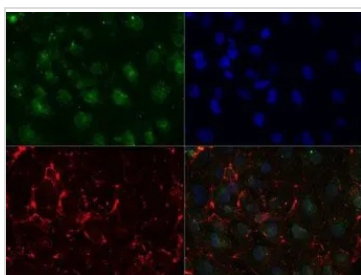
Blue : DAPI



GTX48035 WB Image

WB analysis of NTERA2 cell (A), HUVEC cell (B), Jurkat cell (C), human stomach tissue (D), human brain tissue (E), MEF cell (F), and mouse brain tissue (G) lysates using GTX48035 SSEA-1 antibody[MC-480].

Dilution : 2 µg/ml



GTX48035 ICC/IF Image

ICC/IF analysis of NTERA-2 cells using GTX48035 SSEA-1 antibody[MC-480].

Green : primary antibody

Red : Tubulin

Blue : DAPI

Dilution : 0.1 µg/ml



For full product information, images and publications, please visit our [website](#).