

SSEA-3 antibody [MC-631]

Cat. No. GTX48036

Host	Rat
Clonality	Monoclonal
Isotype	IgM
Applications	WB, ICC/IF, FCM, IP, IHC
Reactivity	Human, Mouse

References (2)

Package

100 µl

Applications

Application Note

*Optimal dilutions/concentrations should be determined by the researcher.

Suggested dilution	Recommended dilution
WB	Assay dependent
ICC/IF	Assay dependent
FCM	Assay dependent
IP	Assay dependent
IHC	Assay dependent

Not tested in other applications.

Calculated MW 36 kDa. ([Note](#))

Properties

Form	Liquid
Buffer	PBS, 0.05% BSA
Preservative	0.05% Sodium azide
Storage	Store as concentrated solution. Centrifuge briefly prior to opening vial. For short-term storage (1-2 weeks), store at 4°C. For long-term storage, aliquot and store at -20°C or below. Avoid multiple freeze-thaw cycles.
Concentration	1 mg/ml (Please refer to the vial label for the specific concentration.)
Immunogen	4-8 cell stage mouse embryos
Purification	Purified by affinity chromatography
Conjugation	Unconjugated



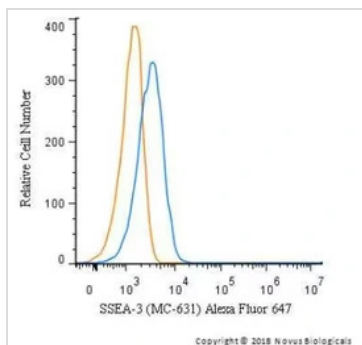
For full product information, images and publications, please visit our [website](#).

For laboratory research use only. Not for any clinical, therapeutic, or diagnostic use in humans or animals. Not for animal or human consumption.

Note

Purchasers shall not, and agree not to enable third parties to, analyze, copy, reverse engineer or otherwise attempt to determine the structure or sequence of the product.

DATA IMAGES

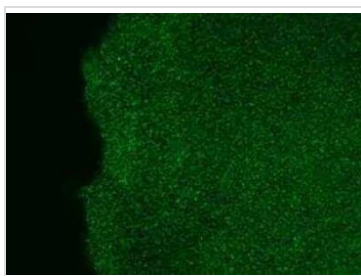
**GTX48036 FCM Image**

FACS analysis of Jurkat cells using GTX48036 SSEA-3 antibody.

Blue: Primary antibody

Orange: Isotype control

Dilution: 5µg/ml

**GTX48036 ICC/IF Image**

ICC/IF analysis of human embryonic stem cell using GTX48036 SSEA-3 antibody.

Green : Primary antibody



For full product information, images and publications, please visit our [website](#).