

## SSEA-3 antibody [MC-631]

Cat. No. GTX48036

Host	Rat
Clonality	Monoclonal
Isotype	IgM
Applications	WB, ICC/IF, FCM, IP, IHC
Reactivity	Human, Mouse

References ( 2 )

Package

100 µl

## Applications

## Application Note

\*Optimal dilutions/concentrations should be determined by the researcher.

Suggested dilution	Recommended dilution
WB	Assay dependent
ICC/IF	Assay dependent
FCM	Assay dependent
IP	Assay dependent
IHC	Assay dependent

Not tested in other applications.

Calculated MW 36 kDa. ( [Note](#) )

## Properties

Form	Liquid
Buffer	PBS, 0.05% BSA
Preservative	0.05% Sodium azide
Storage	Store as concentrated solution. Centrifuge briefly prior to opening vial. For short-term storage (1-2 weeks), store at 4°C. For long-term storage, aliquot and store at -20°C or below. Avoid multiple freeze-thaw cycles.
Concentration	1 mg/ml (Please refer to the vial label for the specific concentration.)
Immunogen	4-8 cell stage mouse embryos
Purification	Purified by affinity chromatography
Conjugation	Unconjugated



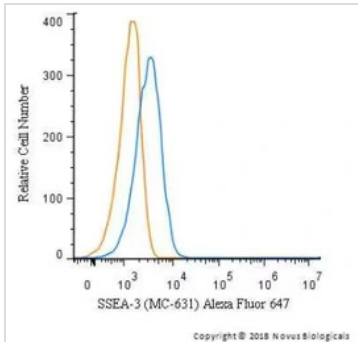
For full product information, images and publications, please visit our [website](#).

For laboratory research use only. Not for any clinical, therapeutic, or diagnostic use in humans or animals. Not for animal or human consumption.

## Note

Purchasers shall not, and agree not to enable third parties to, analyze, copy, reverse engineer or otherwise attempt to determine the structure or sequence of the product.

## DATA IMAGES



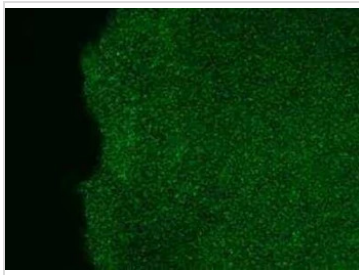
### GTx48036 FCM Image

FACS analysis of Jurkat cells using GTx48036 SSEA-3 antibody.

Blue: Primary antibody

Orange: Isotype control

Dilution: 5µg/ml



### GTx48036 ICC/IF Image

ICC/IF analysis of human embryonic stem cell using GTx48036 SSEA-3 antibody.

Green : Primary antibody



For full product information, images and publications, please visit our [website](#).