

## SSEA-4 antibody [MC-813-70]

**Cat. No. GTX48037**

<b>Host</b>	Mouse
<b>Clonality</b>	Monoclonal
<b>Isotype</b>	IgG3
<b>Applications</b>	WB, ICC/IF, IHC-P, FCM, IP, IHC
<b>Reactivity</b>	Human

References ( 6 )

Package

100 µg

## Applications

**Application Note**

\*Optimal dilutions/concentrations should be determined by the researcher.

Suggested dilution	Recommended dilution
WB	Assay dependent
ICC/IF	Assay dependent
IHC-P	Assay dependent
FCM	Assay dependent
IP	Assay dependent
IHC	Assay dependent

Not tested in other applications.

## Properties

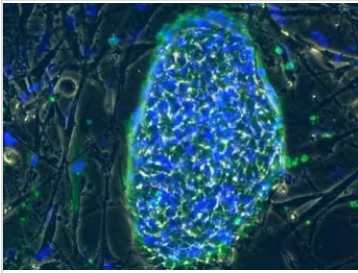
<b>Form</b>	Liquid
<b>Buffer</b>	PBS, 0.05% BSA
<b>Preservative</b>	0.05% Sodium azide
<b>Storage</b>	Store as concentrated solution. Centrifuge briefly prior to opening vial. For short-term storage (1-2 weeks), store at 4°C. For long-term storage, aliquot and store at -20°C or below. Avoid multiple freeze-thaw cycles.
<b>Concentration</b>	0.5 mg/ml (Please refer to the vial label for the specific concentration.)
<b>Immunogen</b>	Human embryonal carcinoma cell line 2102Ep
<b>Purification</b>	Purified by affinity chromatography
<b>Conjugation</b>	Unconjugated

For full product information, images and publications, please visit our [website](#).

For laboratory research use only. Not for any clinical, therapeutic, or diagnostic use in humans or animals. Not for animal or human consumption.

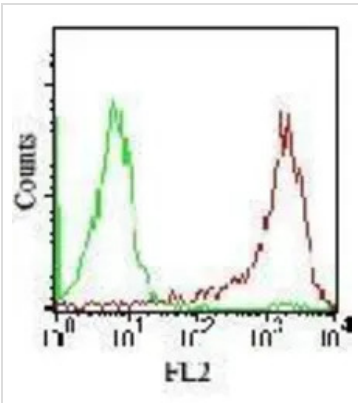
**Note**

Purchasers shall not, and agree not to enable third parties to, analyze, copy, reverse engineer or otherwise attempt to determine the structure or sequence of the product.

**DATA IMAGES**

**GTX48037 ICC/IF Image**

ICC/IF analysis of H9 cells using GTX48037 SSEA-4 antibody.

Green : Primary antibody


**GTX48037 FCM Image**

FACS analysis of 2102Ep cells using GTX48037 SSEA-4 antibody.

Red : Primary antibody

Green : Isotype control

Antibody amount : 0.1 ug



For full product information, images and publications, please visit our [website](#).