

## SSEA-4 antibody [MC-813-70]

Cat. No. GTX48037

Host	Mouse
Clonality	Monoclonal
Isotype	IgG3
Applications	WB, ICC/IF, IHC-P, FCM, IP, IHC
Reactivity	Human

References ( 6 )

Package

100 µg

## Applications

## Application Note

\*Optimal dilutions/concentrations should be determined by the researcher.

Suggested dilution	Recommended dilution
WB	Assay dependent
ICC/IF	Assay dependent
IHC-P	Assay dependent
FCM	Assay dependent
IP	Assay dependent
IHC	Assay dependent

Not tested in other applications.

## Properties

Form	Liquid
Buffer	PBS, 0.05% BSA
Preservative	0.05% Sodium azide
Storage	Store as concentrated solution. Centrifuge briefly prior to opening vial. For short-term storage (1-2 weeks), store at 4°C. For long-term storage, aliquot and store at -20°C or below. Avoid multiple freeze-thaw cycles.
Concentration	0.5 mg/ml (Please refer to the vial label for the specific concentration.)
Immunogen	Human embryonal carcinoma cell line 2102Ep
Purification	Purified by affinity chromatography
Conjugation	Unconjugated

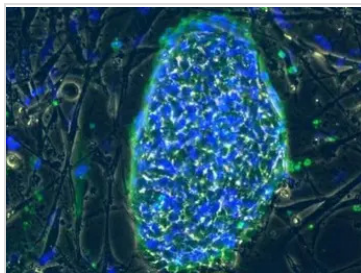


For full product information, images and publications, please visit our [website](#).

For laboratory research use only. Not for any clinical, therapeutic, or diagnostic use in humans or animals. Not for animal or human consumption.

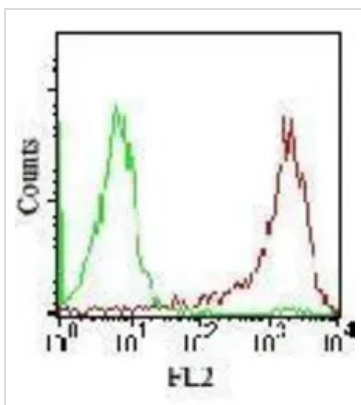
**Note**

Purchasers shall not, and agree not to enable third parties to, analyze, copy, reverse engineer or otherwise attempt to determine the structure or sequence of the product.

**DATA IMAGES**

**GTX48037 ICC/IF Image**

ICC/IF analysis of H9 cells using GTX48037 SSEA-4 antibody.

Green : Primary antibody


**GTX48037 FCM Image**

FACS analysis of 2102Ep cells using GTX48037 SSEA-4 antibody.

Red : Primary antibody

Green : Isotype control

Antibody amount : 0.1 ug



For full product information, images and publications, please visit our [website](#).