

# RNF2 antibody

**Cat. No. GTX48486**

<b>Host</b>	Goat
<b>Clonality</b>	Polyclonal
<b>Isotype</b>	IgG
<b>Applications</b>	WB, ICC/IF, ELISA, Multiplexing
<b>Reactivity</b>	Human, Mouse, Chinese Hamster

**Package**  
50 µg

## Applications

### Application Note

\*Optimal dilutions/concentrations should be determined by the researcher.

Suggested dilution	Recommended dilution
WB	1:500-1:2000
ICC/IF	1:300
ELISA	1:5000-1:25000
Multiplexing	Assay dependent

Not tested in other applications.

**Calculated MW** 38 kDa. ( [Note](#) )

## Properties

<b>Form</b>	Liquid
<b>Buffer</b>	20mM Potassium Phosphate, 150mM NaCl
<b>Preservative</b>	0.01% Sodium azide
<b>Storage</b>	Store as concentrated solution. Centrifuge briefly prior to opening vial. For short-term storage (1-2 weeks), store at 4°C. For long-term storage, aliquot and store at -20°C or below. Avoid multiple freeze-thaw cycles.
<b>Concentration</b>	1.1 mg/ml (Please refer to the vial label for the specific concentration.)
<b>Immunogen</b>	Synthetic peptide corresponding to an internal region near aa 180-205 of human RING1B protein.
<b>Purification</b>	Purified by antigen-affinity chromatography. From serum
<b>Conjugation</b>	Unconjugated

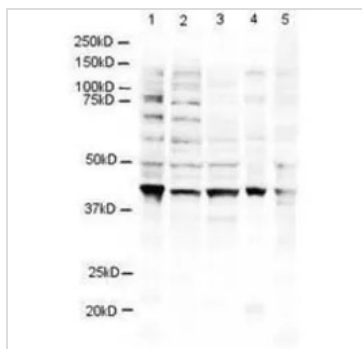


For full product information, images and publications, please visit our [website](#).

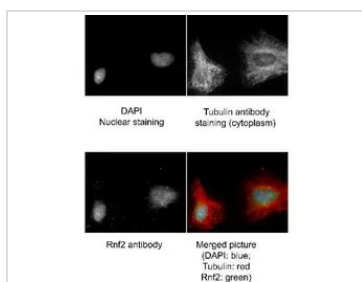
For laboratory research use only. Not for any clinical, therapeutic, or diagnostic use in humans or animals. Not for animal or human consumption.

**Note**

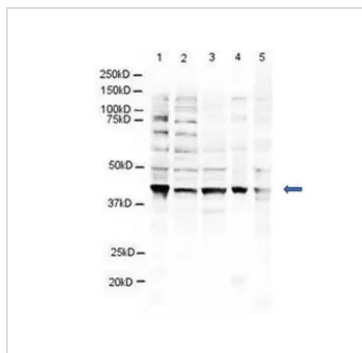
Purchasers shall not, and agree not to enable third parties to, analyze, copy, reverse engineer or otherwise attempt to determine the structure or sequence of the product.

**DATA IMAGES**

**GTx48486 WB Image**

Western blot using GeneTex's Affinity Purified anti-RING1B antibody shows detection of a 38 kDa band corresponding to human RING1B in 3T3 (lane 1), U937 (lane 2), Jurkat (lane 3), mouse brain (lane 4) and CHO-K1 (lane 5) cell lysates. Approximately 20 µg of lysate was run on a SDS-PAGE and transferred onto nitrocellulose followed by reaction with a 1:500 dilution of anti-RING1B antibody incubated at room temperature. Signal was detected using standard techniques.


**GTx48486 ICC/IF Image**

Immunofluorescence Microscopy of Goat anti-RING1B antibody (GTx48486). Tissue: human HeLa cells. Fixation: methanol and blocked with 0.2% fish scale gelatin for 1 hour at 25°C. Antigen retrieval: not required. Primary antibody: RING1B antibody at 1:300 for 20 minutes at 25°C. Secondary antibody: Alexa FluorR488-conjugated Donkey anti-goat IgG secondary antibody at 1:500 for 45 min at RT. Localization: RING1B is nuclear and occasionally cytoplasmic. Staining: RING1B (RNF2) as green signal, Tubulin cytoplasm staining red, and DAPI (blue) nuclear counterstain.


**GTx48486 WB Image**

WB analysis of various samples using GTx48486 RNF2 antibody.

Lane 1 : NIH-3T3 whole cell lysate

Lane 2 : U937 whole cell lysate

Lane 3 : Jurkat whole cell lysate

Lane 4 : Mouse brain tissue lysate

Lane 5 : CHO-K1 whole cell lysate

Loading : 20 µg

Dilution : 1:500



For full product information, images and publications, please visit our [website](https://www.genetex.com).