

RNF2 antibody

Cat. No. GTX48486

Host	Goat
Clonality	Polyclonal
Isotype	IgG
Applications	WB, ICC/IF, ELISA, Multiplexing
Reactivity	Human, Mouse, Chinese Hamster

Package
50 µg

Applications

Application Note

*Optimal dilutions/concentrations should be determined by the researcher.

Suggested dilution	Recommended dilution
WB	1:500-1:2000
ICC/IF	1:300
ELISA	1:5000-1:25000
Multiplexing	Assay dependent

Not tested in other applications.

Calculated MW 38 kDa. ([Note](#))

Properties

Form	Liquid
Buffer	20mM Potassium Phosphate, 150mM NaCl
Preservative	0.01% Sodium azide
Storage	Store as concentrated solution. Centrifuge briefly prior to opening vial. For short-term storage (1-2 weeks), store at 4°C. For long-term storage, aliquot and store at -20°C or below. Avoid multiple freeze-thaw cycles.
Concentration	1.1 mg/ml (Please refer to the vial label for the specific concentration.)
Immunogen	Synthetic peptide corresponding to an internal region near aa 180-205 of human RING1B protein.
Purification	Purified by antigen-affinity chromatography. From serum
Conjugation	Unconjugated

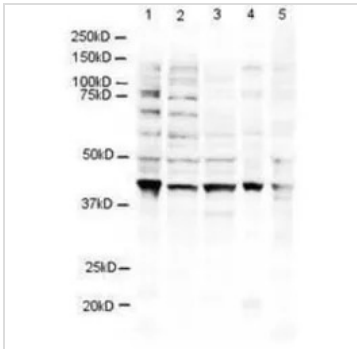


For full product information, images and publications, please visit our [website](#).

For laboratory research use only. Not for any clinical, therapeutic, or diagnostic use in humans or animals. Not for animal or human consumption.

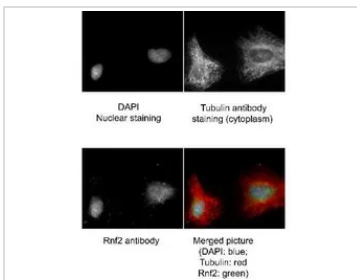
Note
Purchasers shall not, and agree not to enable third parties to, analyze, copy, reverse engineer or otherwise attempt to determine the structure or sequence of the product.

DATA IMAGES



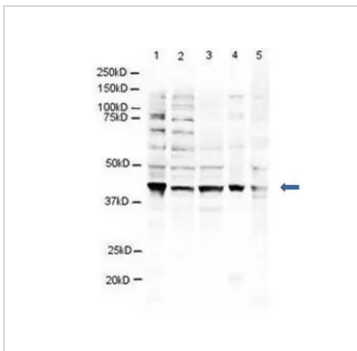
GTX48486 WB Image

Western blot using GeneTex's Affinity Purified anti-RING1B antibody shows detection of a 38 kDa band corresponding to human RING1B in 3T3 (lane 1), U937 (lane 2), Jurkat (lane 3), mouse brain (lane 4) and CHO-K1 (lane 5) cell lysates. Approximately 20 µg of lysate was run on a SDS-PAGE and transferred onto nitrocellulose followed by reaction with a 1:500 dilution of anti-RING1B antibody incubated at room temperature. Signal was detected using standard techniques.



GTX48486 ICC/IF Image

Immunofluorescence Microscopy of Goat anti-RING1B antibody (GTX48486). Tissue: human HeLa cells. Fixation: methanol and blocked with 0.2% fish scale gelatin for 1 hour at 25°C. Antigen retrieval: not required. Primary antibody: RING1B antibody at 1:300 for 20 minutes at 25°C. Secondary antibody: Alexa FluorR488-conjugated Donkey anti-goat IgG secondary antibody at 1:500 for 45 min at RT. Localization: RING1B is nuclear and occasionally cytoplasmic. Staining: RING1B (RNF2) as green signal, Tubulin cytoplasm staining red, and DAPI (blue) nuclear counterstain.



GTX48486 WB Image

WB analysis of various samples using GTX48486 RNF2 antibody.
Lane 1 : NIH-3T3 whole cell lysate
Lane 2 : U937 whole cell lysate
Lane 3 : Jurkat whole cell lysate
Lane 4 : Mouse brain tissue lysate
Lane 5 : CHO-K1 whole cell lysate
Loading : 20 µg
Dilution : 1:500



For full product information, images and publications, please visit our [website](#).