

## PSMD10 antibody

**Cat. No. GTX48519**

<b>Host</b>	Rabbit
<b>Clonality</b>	Polyclonal
<b>Isotype</b>	IgG
<b>Applications</b>	WB, ICC/IF, FCM
<b>Reactivity</b>	Human, Mouse, Rat, Zebrafish, Bovine, Pig

References ( 2 )

Package

50 µl

## Applications

**Application Note**

\*Optimal dilutions/concentrations should be determined by the researcher.

Suggested dilution	Recommended dilution
WB	2 µg/ml
ICC/IF	1:500
FCM	1:500

Not tested in other applications.

**Calculated MW** 24 kDa. ( [Note](#) )

## Properties

<b>Form</b>	Liquid
<b>Buffer</b>	Tris-Glycine, 150mM NaCl
<b>Preservative</b>	0.05% Sodium azide
<b>Storage</b>	Store as concentrated solution. Centrifuge briefly prior to opening vial. For short-term storage (1-2 weeks), store at 4°C. For long-term storage, aliquot and store at -20°C or below. Avoid multiple freeze-thaw cycles.
<b>Concentration</b>	0.97 mg/ml (Please refer to the vial label for the specific concentration.)
<b>Immunogen</b>	A synthetic peptide made to an internal portion of the human Gankyrin protein sequence (between residues 100-200). [UniProt# O75832]
<b>Purification</b>	Purified by antigen-affinity chromatography
<b>Conjugation</b>	Unconjugated

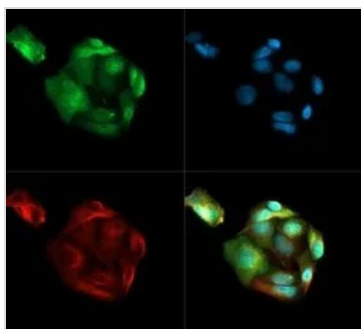
**Note**

For laboratory research use only. Not for any clinical, therapeutic, or diagnostic use in humans or animals. Not for animal or human consumption.

Purchasers shall not, and agree not to enable third parties to, analyze, copy, reverse engineer or otherwise attempt to determine the structure or sequence of the product.

For full product information, images and publications, please visit our [website](#).

DATA IMAGES



**GTX48519 ICC/IF Image**

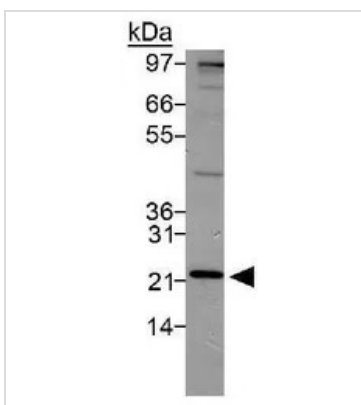
ICC/IF analysis of HepG2 cells using GTX48519 PSMD10 antibody.

Green : primary antibody

Red : Tubulin

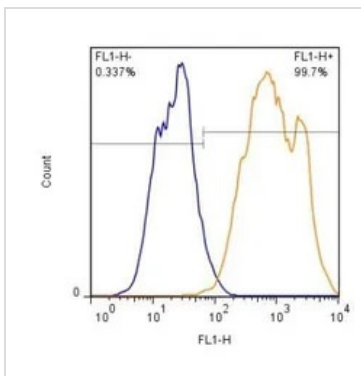
Blue : DAPI

Dilution : 1:500



**GTX48519 WB Image**

WB analysis of HeLa cell lysate using GTX48519 PSMD10 antibody.



**GTX48519 FCM Image**

FACS (Intracellular staining) analysis of Jurkat cells using GTX48519 PSMD10 antibody.

Orange : Primary antibody

Blue : secondary antibody control

Dilution : 1:500



For full product information, images and publications, please visit our [website](#).