

SLC31A1 / CTR1 antibody

Cat. No. GTX48534

Host	Rabbit
Clonality	Polyclonal
Isotype	IgG
Applications	WB, ICC/IF, IHC-P, IHC-Fr, IHC
Reactivity	Human, Mouse, Rat, Zebrafish, Pig, Xenopus

References (5)

Package

50 µl

Applications

Application Note

*Optimal dilutions/concentrations should be determined by the researcher.

Suggested dilution	Recommended dilution
WB	Assay dependent
ICC/IF	1:500
IHC-P	1:250
IHC-Fr	Assay dependent
IHC	1:250

Not tested in other applications.

Calculated MW 21 kDa. ([Note](#))

Properties

Form	Liquid
Buffer	Tris-Citrate/Phosphate
Preservative	0.1% Sodium azide
Storage	Store as concentrated solution. Centrifuge briefly prior to opening vial. Store at 4°C. DO NOT FREEZE.
Concentration	1 mg/ml (Please refer to the vial label for the specific concentration.)
Immunogen	A synthetic peptide derived from a C-terminal sequence of human SLC31A1/CTR1 [UniProt# O15431]
Purification	Purified by antigen-affinity chromatography
Conjugation	Unconjugated

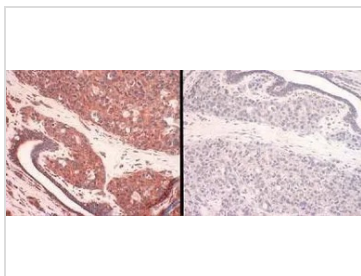


For full product information, images and publications, please visit our [website](#).

For laboratory research use only. Not for any clinical, therapeutic, or diagnostic use in humans or animals. Not for animal or human consumption.

Note

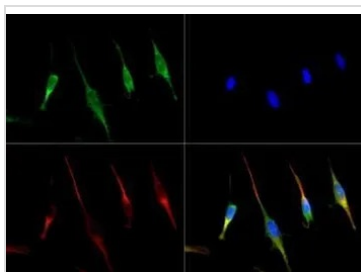
Purchasers shall not, and agree not to enable third parties to, analyze, copy, reverse engineer or otherwise attempt to determine the structure or sequence of the product.

DATA IMAGES

GTX48534 IHC-P Image

IHC-P analysis of human breast carcinoma tissue using GTX48534 SLC31A1 / CTR1 antibody.

Panel 1: human CTR1 staining of breast cancer tissue

Panel 2: human CTR1-antigen competition in breast cancer tissue

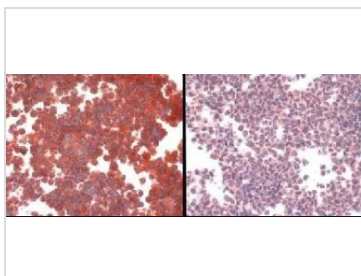

GTX48534 ICC/IF Image

ICC/IF analysis of NIH-3T3 cells using GTX48534 SLC31A1 / CTR1 antibody.

Green : primary antibody

Red : Tubulin

Blue : DAPI


GTX48534 ICC/IF Image

ICC/IF analysis of SLC31A1 / CTR1 overexpressing cells with (left) or without (right) peptide competition using GTX48534 SLC31A1 / CTR1 antibody.



For full product information, images and publications, please visit our [website](#).