

TRBP2 antibody

Cat. No. GTX48546

Host	Rabbit
Clonality	Polyclonal
Isotype	IgG
Applications	WB
Reactivity	Human, Mouse, Rat, Zebrafish, Bovine, Primate

References (1)

Package

50 µg

Applications

Application Note

*Optimal dilutions/concentrations should be determined by the researcher.

Suggested dilution	Recommended dilution
WB	0.5 - 2 µg/ml
Not tested in other applications.	

Calculated MW 39 kDa. ([Note](#))

Product Note

The amino acid sequence used as immunogen is 100% homologous in human (isoforms a and b), mouse, rat, bovine, chimp, and zebrafish. Human isoform a is a 366 amino acid protein, and human isoform b is a 345 amino acid protein.

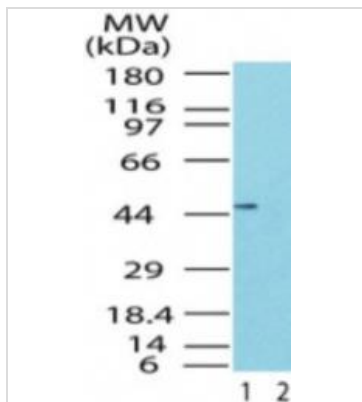
Properties

Form	Liquid
Buffer	PBS, 0.05% BSA
Preservative	0.05% Sodium azide
Storage	Store as concentrated solution. Centrifuge briefly prior to opening vial. For short-term storage (1-2 weeks), store at 4°C. For long-term storage, aliquot and store at -20°C or below. Avoid multiple freeze-thaw cycles.
Concentration	0.5 mg/ml (Please refer to the vial label for the specific concentration.)
Immunogen	A portion of amino acids 150-200 of human TRBP2 was used as the immunogen.
Purification	Purified by antigen-affinity chromatography
Conjugation	Unconjugated
Note	<p>For laboratory research use only. Not for any clinical, therapeutic, or diagnostic use in humans or animals. Not for animal or human consumption.</p> <p>Purchasers shall not, and agree not to enable third parties to, analyze, copy, reverse engineer or otherwise attempt to determine the structure or sequence of the product.</p>



For full product information, images and publications, please visit our [website](#).

DATA IMAGES



GTX48546 WB Image

WB analysis of human brain tissue lysate in the (1) absence and (2) presence of immunizing peptide using GTX48546 TRBP antibody.

Dilution : 0.5 µg/ml



For full product information, images and publications, please visit our [website](#).