

SIN1 antibody

Cat. No. GTX48547

Host	Rabbit
Clonality	Polyclonal
Isotype	IgG
Application	WB
Reactivity	Human, Mouse, Rat, Zebrafish, Bovine, Dog, Chicken, Avian

Package
50 µg

APPLICATION

Application Note

*Optimal dilutions/concentrations should be determined by the researcher.

Suggested dilution	Recommended dilution
WB	0.5 - 2 µg/ml

Not tested in other applications.

Calculated MW 59 kDa. ([Note](#))

Product Note There are multiple isoforms of this protein, ranging from approximately 310 amino acids to approximately 522 amino acids. Isoform distribution varies with tissue type.

PROPERTIES

Form	Liquid
Buffer	PBS, 0.2% Gelatin
Preservative	0.05% Sodium azide
Storage	Store as concentrated solution. Centrifuge briefly prior to opening vial. For short-term storage (1-2 weeks), store at 4°C. For long-term storage, aliquot and store at -20°C or below. Avoid multiple freeze-thaw cycles.
Concentration	0.5 mg/ml (Please refer to the vial label for the specific concentration.)
Immunogen	A portion of amino acids 85-102 (NTAQLRLRLRKERQNQIK) of human Mip1 was used as the immunogen.
Purification	Protein G purified
Conjugation	Unconjugated

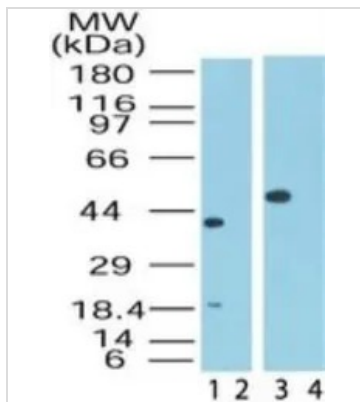
Note For laboratory research use only. Not for any clinical, therapeutic, or diagnostic use in humans or animals. Not for animal or human consumption.

Purchasers shall not, and agree not to enable third parties to, analyze, copy, reverse engineer or otherwise attempt to determine the structure or sequence of the product.



For full product information, images and publications, please visit our [website](#).

DATA IMAGES



GTX48547 WB Image

WB analysis of human heart/skeletal muscle lysate in the (1)/(3) absence and (2)/(4) presence of immunizing peptide using GTX48547 SIN1 antibody.

Dilution : 5 µg/ml



For full product information, images and publications, please visit our [website](#).

Date 2024 / 05 / 17 Page 2 of 2