

DNMT1 antibody [60B1220.1]

Cat. No. GTX48548

Host	Mouse
Clonality	Monoclonal
Isotype	IgG1
Applications	WB, ICC/IF, IHC-P, FCM, IP, ChIP assay, MS, IHC (Free Floating)
Reactivity	Human, Mouse, Rat, Pig

Package
50 µg

Applications

Application Note

*Optimal dilutions/concentrations should be determined by the researcher.

Suggested dilution	Recommended dilution
WB	0.1 - 0.5 µg/ml
ICC/IF	1:10
IHC-P	1:50 - 1:500
FCM	Assay dependent
IP	1:10 - 1:500
ChIP assay	1:20 - 1:1000
MS	Assay dependent
IHC (Free Floating)	1:500

Not tested in other applications.

Calculated MW 183 kDa. ([Note](#))

Properties

Form	Liquid
Buffer	PBS
Preservative	0.05% Sodium azide
Storage	Store as concentrated solution. Centrifuge briefly prior to opening vial. For short-term storage (1-2 weeks), store at 4°C. For long-term storage, aliquot and store at -20°C or below. Avoid multiple freeze-thaw cycles.
Concentration	1 mg/ml (Please refer to the vial label for the specific concentration.)
Immunogen	This antibody was raised against a synthetic peptide corresponding to amino acids 637-650 (EKDDREDKENAFKR) of human Dnmt1 (Genbank Accession No. NP_001370).
Purification	Protein G purified



For full product information, images and publications, please visit our [website](#).

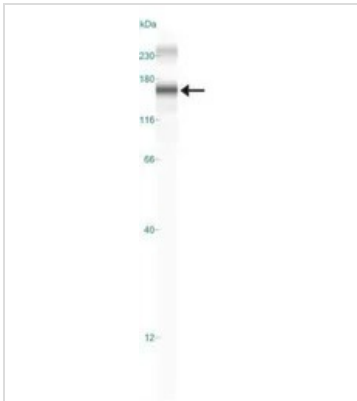
Conjugation

Unconjugated

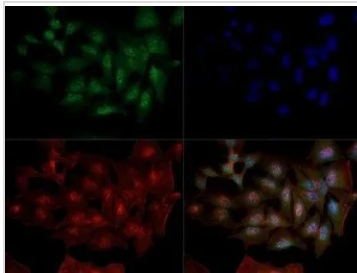
Note

For laboratory research use only. Not for any clinical, therapeutic, or diagnostic use in humans or animals. Not for animal or human consumption.

Purchasers shall not, and agree not to enable third parties to, analyze, copy, reverse engineer or otherwise attempt to determine the structure or sequence of the product.

DATA IMAGES

GTX48548 WB Image

WB analysis of HeLa cell lysate using GTX48548 DNMT1 antibody [60B1220.1].


GTX48548 ICC/IF Image

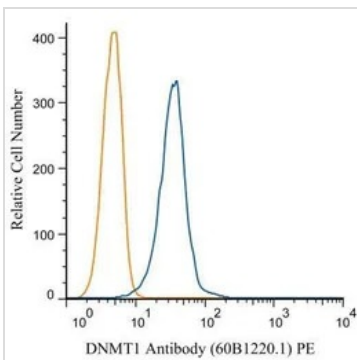
ICC/IF analysis of HeLa cells using GTX48548 DNMT1 antibody [60B1220.1].

Green : primary antibody

Red : Tubulin

Blue : DAPI

Dilution : 1:10


GTX48548 FCM Image

FACS (Intracellular staining) analysis of HeLa cells using GTX48548 DNMT1 antibody [60B1220.1].

Blue : Primary antibody

Orange : isotype control

Fixation : 4% PFA


 For full product information, images and publications, please visit our [website](#).