

# PLK1 antibody

**Cat. No. GTX48549**

<b>Host</b>	Rabbit
<b>Clonality</b>	Polyclonal
<b>Isotype</b>	IgG
<b>Application</b>	WB, IHC-P
<b>Reactivity</b>	Human, Mouse, Rat, Zebrafish, Bovine, Dog, Pig, Caenorhabditis elegans, Xenopus, Primate

**Package**

50 µl

## APPLICATION

### Application Note

\*Optimal dilutions/concentrations should be determined by the researcher.

Suggested dilution	Recommended dilution
WB	1:1000 - 1:2000
IHC-P	Assay dependent

Not tested in other applications.

**Calculated MW** 68 kDa. ( [Note](#) )

## PROPERTIES

<b>Form</b>	Liquid
<b>Buffer</b>	Serum diluted with PBS, 0.05% BSA
<b>Preservative</b>	0.05% Sodium azide
<b>Storage</b>	Store as concentrated solution. Centrifuge briefly prior to opening vial. For short-term storage (1-2 weeks), store at 4°C. For long-term storage, aliquot and store at -20°C or below. Avoid multiple freeze-thaw cycles.
<b>Immunogen</b>	A portion of amino acids 100-200 of human PLK1 was used as the immunogen.
<b>Purification</b>	Unpurified
<b>Conjugation</b>	Unconjugated

### Note

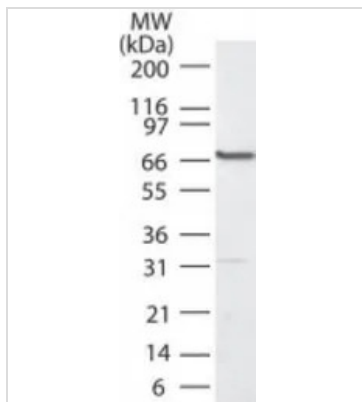
For laboratory research use only. Not for any clinical, therapeutic, or diagnostic use in humans or animals. Not for animal or human consumption.

Purchasers shall not, and agree not to enable third parties to, analyze, copy, reverse engineer or otherwise attempt to determine the structure or sequence of the product.



For full product information, images and publications, please visit our [website](#).

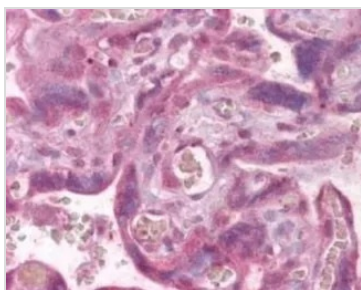
## DATA IMAGES



### GTX48549 WB Image

WB analysis of HCT-116 cell lysate using GTX48549 PLK1 antibody.

Dilution : 1:2000



### GTX48549 IHC-P Image

IHC-P analysis of human placenta tissue using GTX48549 PLK1 antibody.

Dilution : 1:100



For full product information, images and publications, please visit our [website](#).